

# IBM Management and Platform

A complete and composable solution for application deployment and management



## **Niklaus Hirt**

DevOps Architect / Cloud Architect

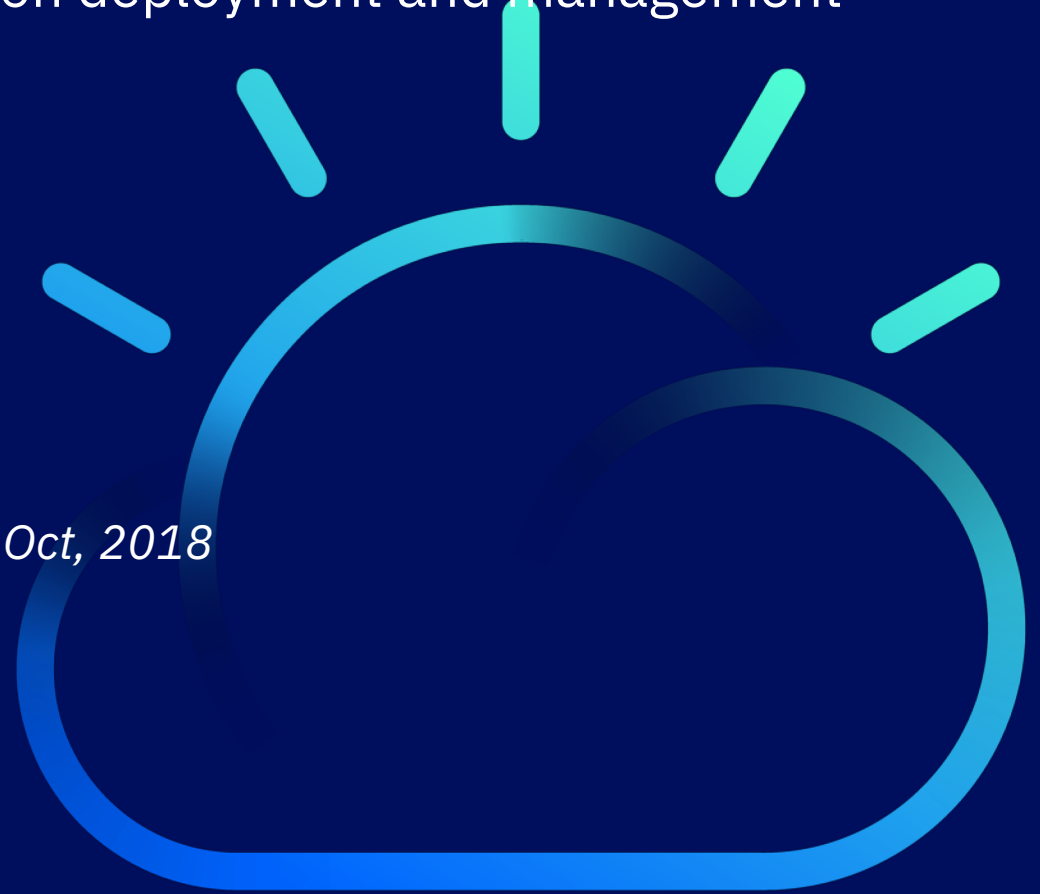
[nikh@ch.ibm.com](mailto:nikh@ch.ibm.com)

*Presented by Pierre Kauffmann for Common Romandie 11<sup>th</sup> Oct, 2018*

*@PierreKauffmann*

*<https://www.linkedin.com/in/kauffmann/>*

*[Kauffmann@ch.ibm.com](mailto:Kauffmann@ch.ibm.com)*



**IBM Cloud**



# disruption

dis'rupʃn/

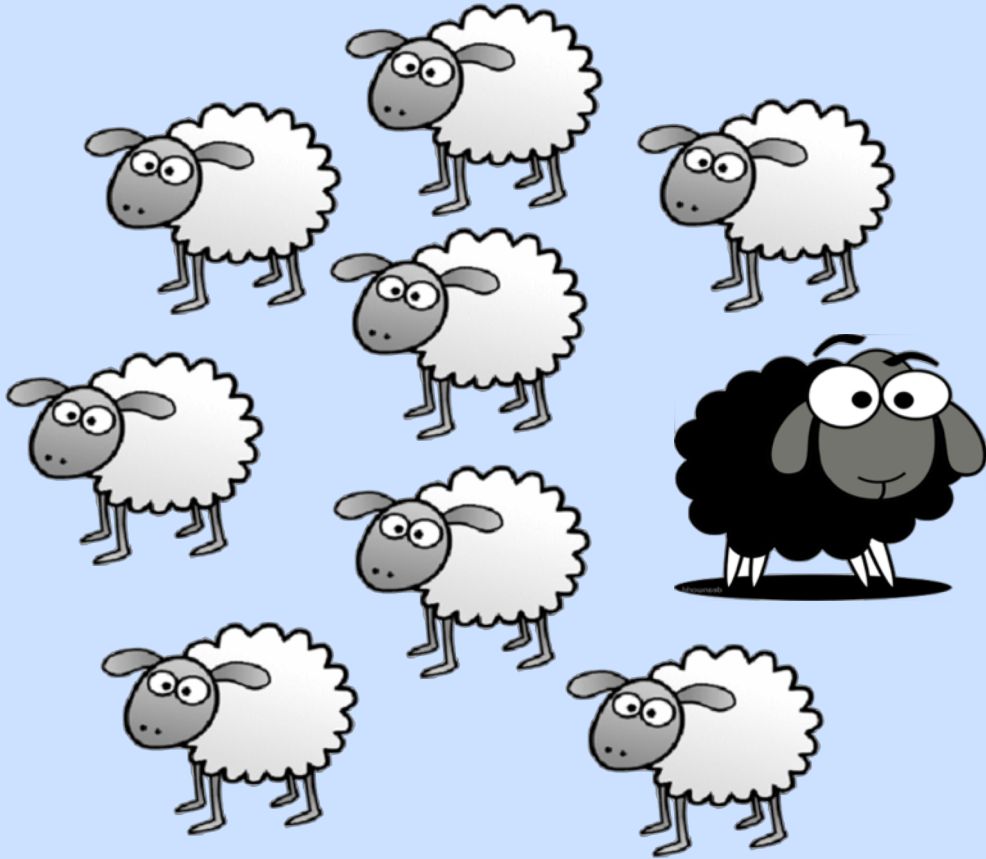
*noun*

Business. a **radical change** in an industry, business strategy, etc., especially involving the introduction of a **new product or service** that creates a **new market**





# Disruption is new reality



## disruption

dis'rupʃn/

*noun*

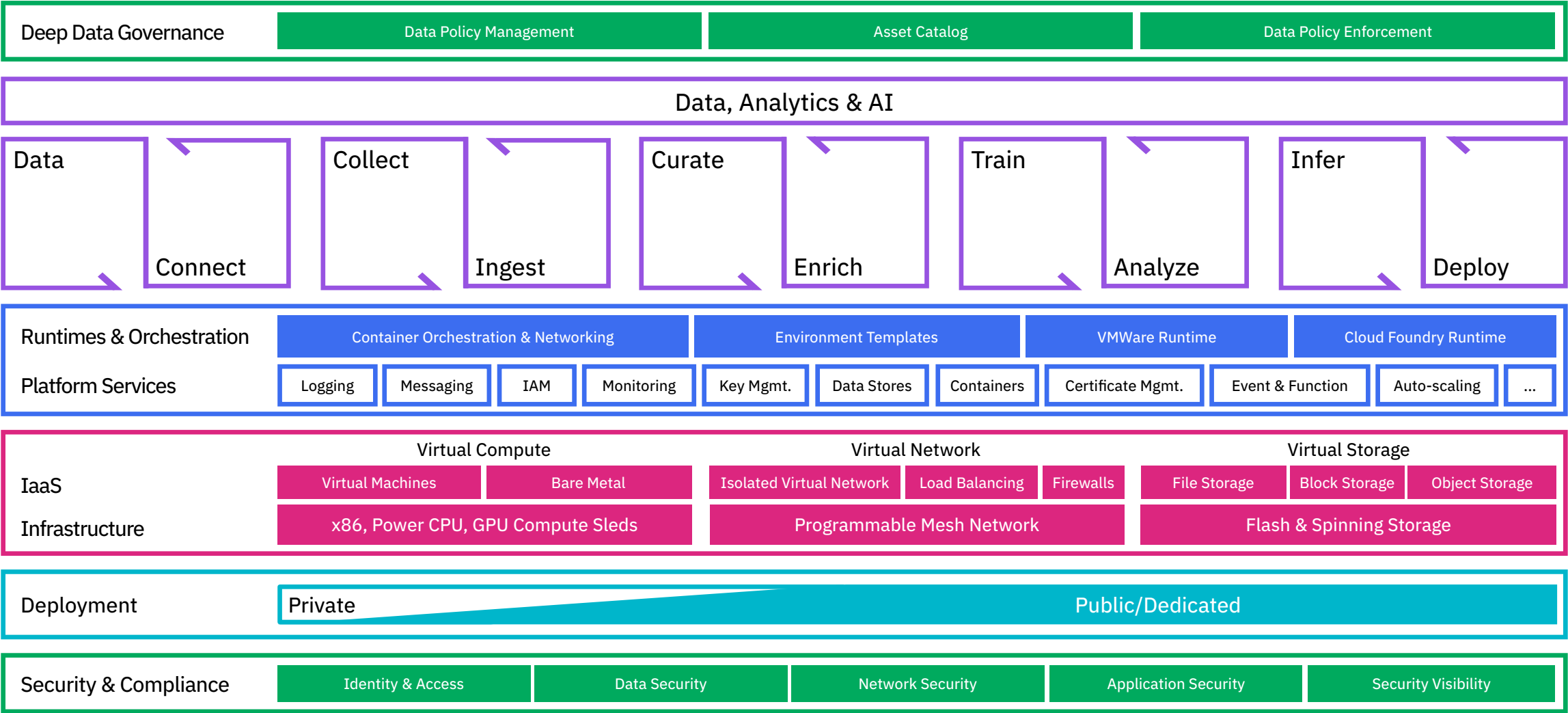
Business. a **radical change** in an industry, business strategy, etc., especially involving the introduction of a **new product or service** that creates a **new market**

# Digital Transformation is the new normal

# How do you achieve digital transformation?

Adopt new <b>Processes</b>	Adopt new <b>Technologies</b>	Adopt new <b>Tools</b>	Adopt <b>Usages</b>
Continuous Integration Continuous Build Continuous Deploy Agile Dev Models	Architectural patterns (Microservices)  Frameworks (Java MicroProfile, Spring ...)  Node.js , Swift	Git, Github, Gitlab  Jenkins  UrbanCode  Docker  Kubernetes	Docker, Kubernetes  Virtualization, VMs  Monitoring, Dashboards, Alerts

# IBM Cloud



# IBM Cloud - Hybrid Model

Consistency in...

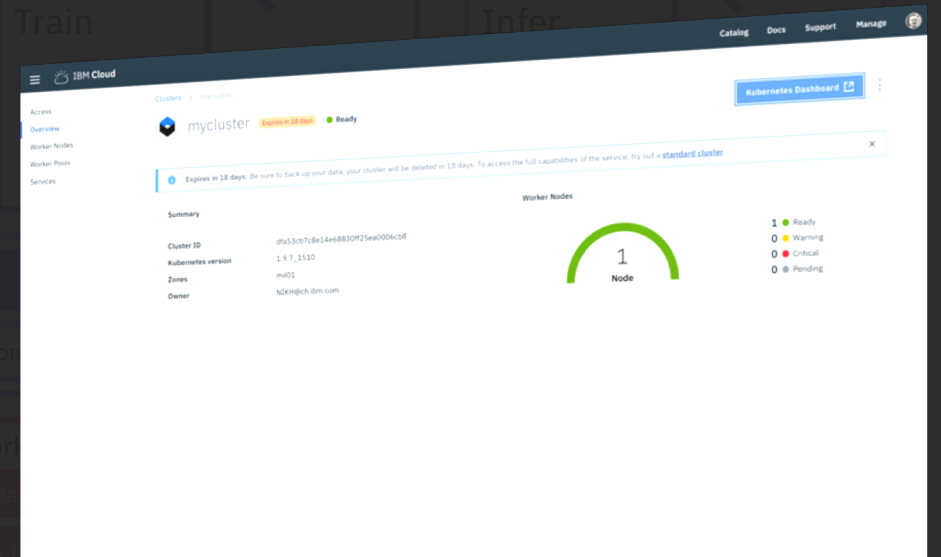
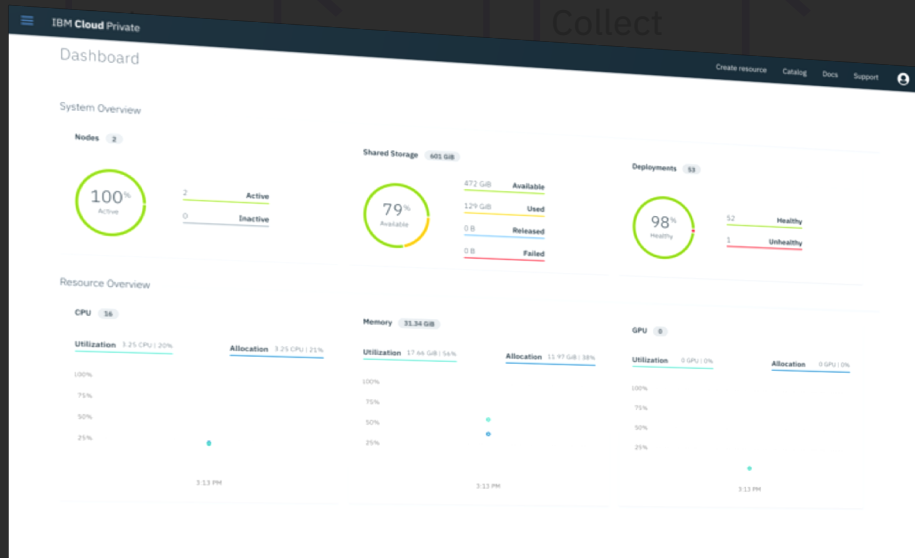
Platform

Deployment

Code Portability

Management

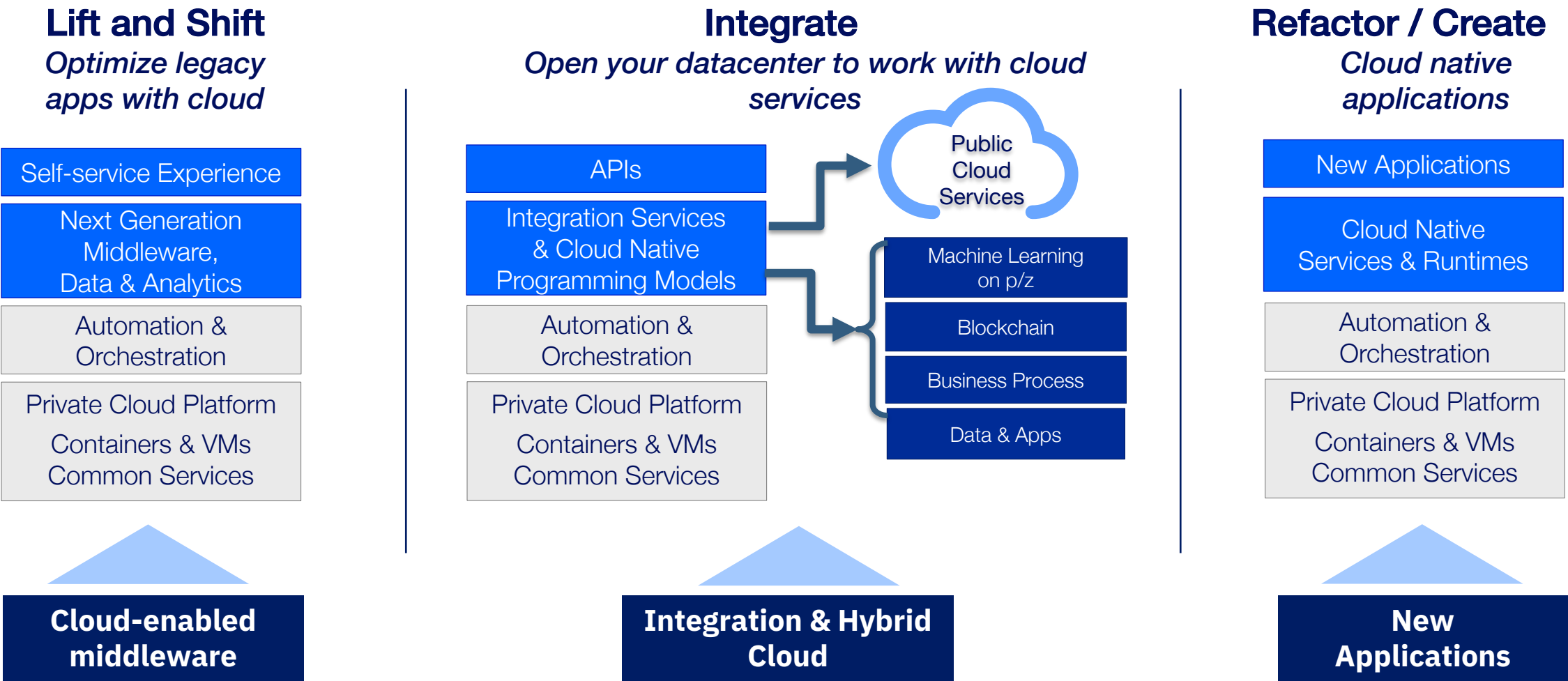
Hybrid Data



ON-PREMISES

OFF-PREMISES

# Cloud Adoption - Use Cases



# Terminology – Key Words You Need to Know

## Microservices

Microservices decompose monolithic applications into independent single function modules



## Containers

Lightweight, stand-alone, executable package (containers) of software that includes everything needed to run it



Docker

## Orchestration

Platform for automating deployment, scaling, and management of containerized applications



kubernetes

# IBM Cloud Private



## Kubernetes based container platform

Industry leading  
container orchestration  
platform across private,  
dedicated & public clouds



## Common Services

To simplify operations  
management, DevOps  
and hybrid integration



## IBM Middleware, Data & Analytics Services

Cloud enabled  
middleware, application  
runtimes, messaging,  
databases and analytics  
to optimize current  
investments and rapidly  
innovate

IBM Cloud Private is a **software based, customer managed application platform** for developing and managing on-premises, containerized applications, built on **open** container and data services **technologies** able to run on **existing on-premises infrastructure**.



# Kubernetes

## *Assemble vs. Operate*



**kubernetes**

<https://github.com/kubernetes/kubernetes>



**etcd**

<https://github.com/coreos/etcd>



**istio**

<https://github.com/istio/istio>



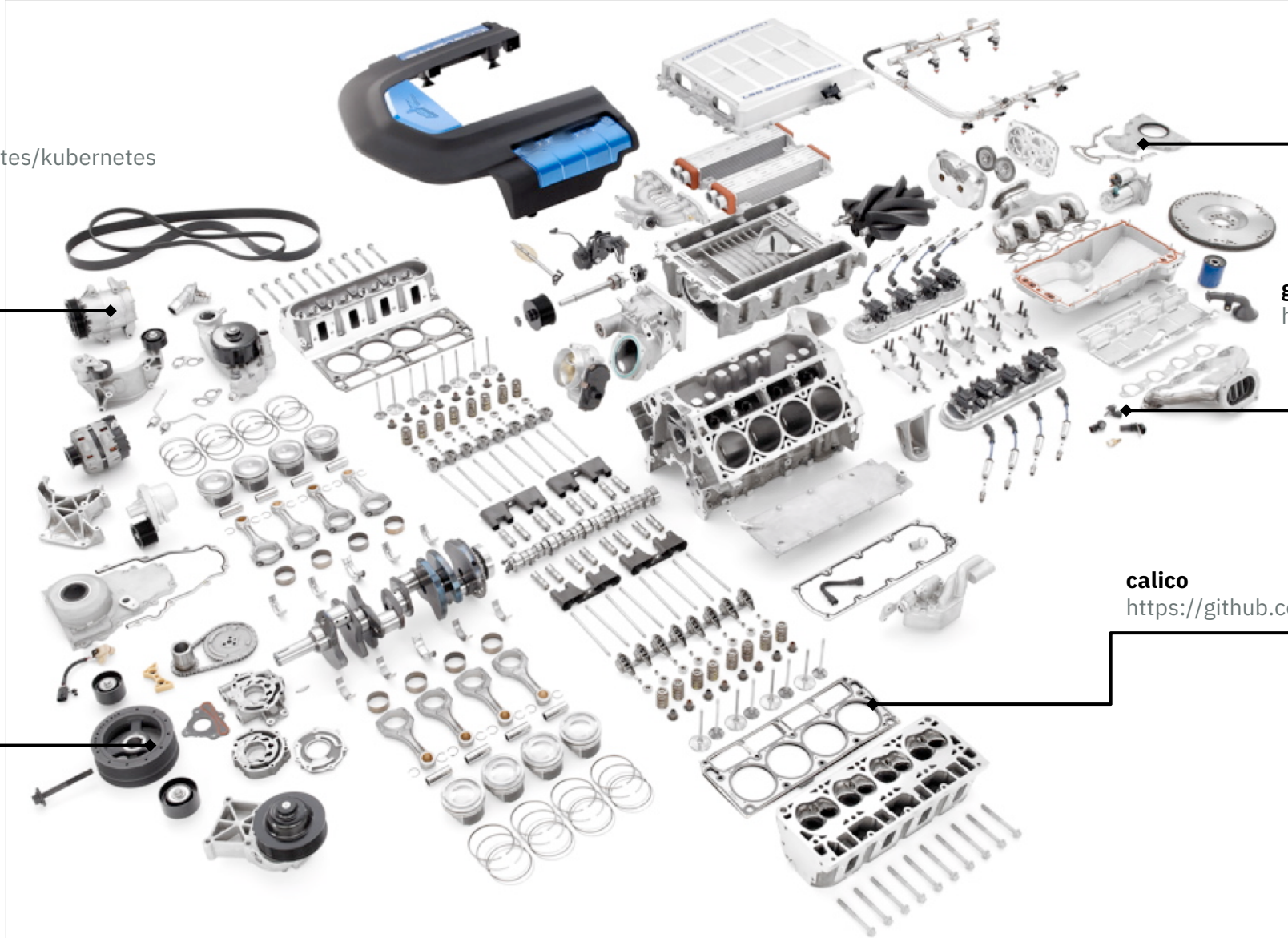
**grafana**

<https://github.com/grafana/grafana>



**calico**

<https://github.com/projectcalico/calico>





# Kubernetes *Assemble vs. Operate*

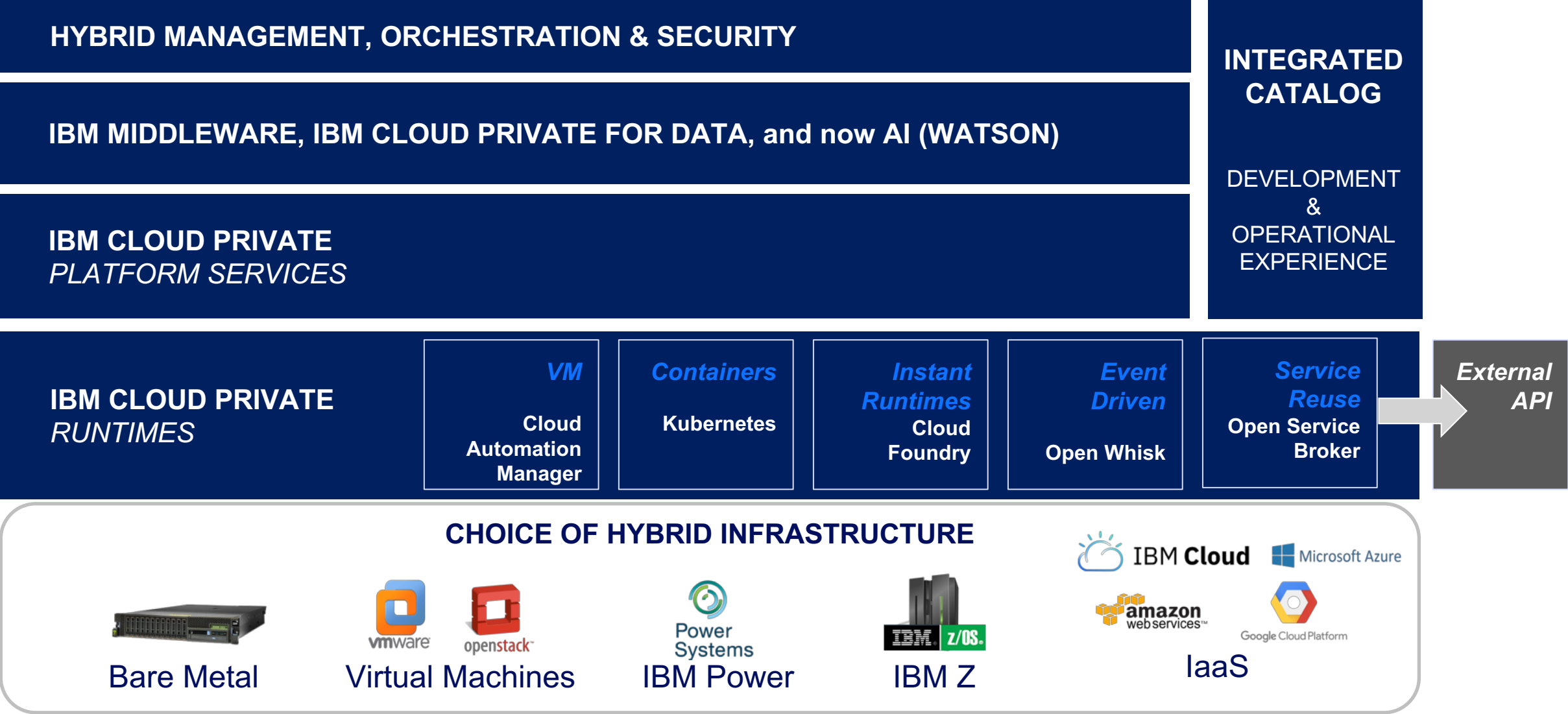


IBM **Cloud Private**

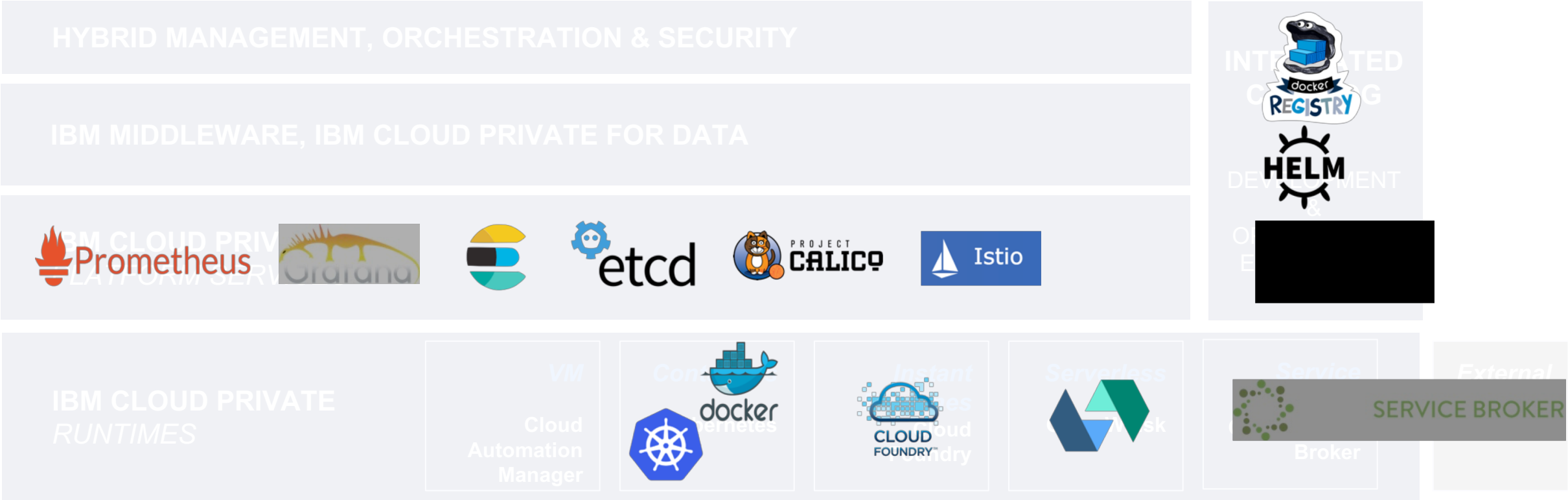


IBM Cloud Private is a **software based, customer managed application platform** for developing and managing on-premises, containerized applications, built on **open** container and data services **technologies** able to run on **existing on-premises infrastructure**.

# IBM Cloud Private - Architecture



# IBM Cloud Private – Open by Design



**Enterprise** grade. **Open** by design.

# IBM Cloud Private – Open by Design



IBM Cloud Private



External  
SERVICE BROKER

**Enterprise** grade. **Open** by design.

# Use Cases



# IBM Cloud Private for Data

Helps make your data ready for AI



## 2 Ladder to AI



Embed machine learning everywhere



**Analyze** insights on demand



**Organize** data so it can be trusted



**Collect** relevant data and make it simple & accessible

## 1 Strong Foundation – Built on “IBM Cloud Private”

# IBM Cloud Private for Data

## Open, Extensible API Platform



App Developers



Business Partners

## Personalized, Collaborative Team Platform



Data Engineers



Data Stewards



Data Scientists



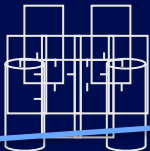
Business Users



Instant, Pre-assembled Provisioning



Admin & Ops Dashboards



Cloud-native Data Micro Services

Collect Data

- Databases on-demand
- Data warehousing
- Fast data ingest / Streaming data
- Federated query

Organize Data

- Data integration and Transformation
- Data curation
- Governance, privacy: policies & rules
- Data asset lifecycle management

Analyze Data

- Data visualization & exploration
- Machine learning & deep learning
- Model management & deployment
- Dashboards & business reporting

Enterprise Data Catalogs



IBM Cloud Private



Kubernetes Platforms

✓ Elastic  
Runtimes

✓ Product Ready  
Operations

✓ Built-in Continuous  
Delivery

✓ Secure to the Core

# IBM Cloud Private for Data

## Top 4 Use Cases



### Accelerate Data Monetization

**1. Manage all your enterprise data regardless of where it lives**

*(Data Virtualization)*

**2. Gain control & leverage your data from connected devices**

*(Streaming analytics)*



### Operationalize Data Science & AI

**Build, deploy, manage & govern models & data @ scale to improve business outcomes**

**(see following slides for details)**

- e.g.
- a. Customer Churn
  - b. Cross Sell / Up Sell
  - c. Predictive Maintenance



### Shift to Next-Gen workloads

**Shift to Cloud Native**

- a. Provision & scale in minutes
- b. Build once, deploy anywhere – multi cloud support
- c. Built in automation & collaboration to increase productivity



### Smarter Compliance

**Accelerate transformation for compliance**

- a. GDPR Compliance
- b. Banking Regulatory Compliance : Basel III, BCBS 239 etc.





# Watson ICP Roadmap

*Subject to change*

Q3 2018

## Watson Assistant

- *Available Now*
- Initial Capabilities:
  - Classification (intents)
  - Entities
  - Dialog
- Languages: All Public Cloud Languages

## Watson Speech-to-Text: Customer Care

- *Available Now*
- Initial Capabilities:
  - Speech Transcription
  - Language/Acoustic Customization
  - PCI Redaction
- Language Support:
  - U.S. English, Japanese, Korean out-of-the-box w/ customization for fine tuning
  - Other currently supported languages may require customization and/or account service support to achieve desired quality levels.

## Compare & Comply

- New Features: *Available Now*
  - Element Classification model enhancements
  - Comparison API
  - Table Understanding
  - OCR/scanned document intake

Q4 2018

## Watson Discovery

## New product TbA

## Watson Speech Analytics: Customer Care

## Compare & Comply

1H 2019

## Many others

# IBM Watson Assistant for IBM Cloud Private

Provides simplified toolset for rapidly building conversational AI solutions on-premises and in self-managed cloud

## Overview

Watson Assistant is an enterprise grade, cloud based technology that enables business users and developers to collaborate to build conversational AI solutions. Watson Assistant is highly flexible, allowing you to deploy small, focused solutions or to scale to enterprise deployments supporting millions of conversations. With simplified tooling, it allows collaboration between business SMEs and developers to build conversational solutions and advanced dialog flows, without needing to be an expert in machine learning.

## ICP Benefits

Watson Assistant for IBM Cloud Private provides organizations with the capability to run IBM's robust, conversational platform on their own hardware, behind their own firewall, maintaining the security measures and controls that enterprises have in place for their applications and data.



# IBM Watson Speech to Text Customer Care on IBM Cloud Private

Transcribes  
customer care  
audio to help  
deliver meaningful  
insights and  
analytics.

## Overview

To effectively manage service professionals, as well as assure a positive customer experience, team leaders across the customer care community have to understand the details of all service calls. As a result, they spend tens of hours weekly parsing through and listening to recordings, rather than using that time to gain valuable and actionable business insights. By using its advanced transcription and unique ability to extract keywords and customize vocabularies to user-specific environments, Watson™ Speech to Text: Customer Care on IBM Cloud Private takes this manual process and automates it, providing team leaders more efficient analysis for quicker actionable insight into their team productivity and customer experience. an expert in machine learning.

## ICP Benefits

With the addition of Watson Speech to Text: Customer Care on IBM Cloud Private, customer care leaders can strengthen their customer engagement process, improve their service quality, and respond and analyze calls with an efficient use of resources.



# IBM Watson Compare & Comply: Element Classification on IBM Cloud Private

Parses dense legal language, at scale, turning contractual content into actionable insights.

## Overview

Across industries, the workload of legal, procurement, and regulatory professionals is growing and becoming more complex. This results in increasing maintenance and compliance costs. IBM Watson Compare & Comply augments human intelligence by extracting the semantics within governing documents, such as contracts and regulations, and can help these professionals better understand them – making workers more effective and efficient. It can do this by quickly identifying the responsible parties, types of actions required, and categories included in their governing documents, improving their ability to do analysis and reviews.

## ICP Benefits

Watson Compare & Comply: Element Classification allows companies to bring Watson to where their data is in a way that enterprises are familiar and comfortable with by respecting the security measures and controls they have in place for their applications and data. Whether set up by in-house experts or complemented by IBM's team of advisors, it offers a pre-trained and tailorable solution to meet their needs.





# Inspur selects IBM Cloud Private to deploy their industrial cloud solutions

## Business Needs

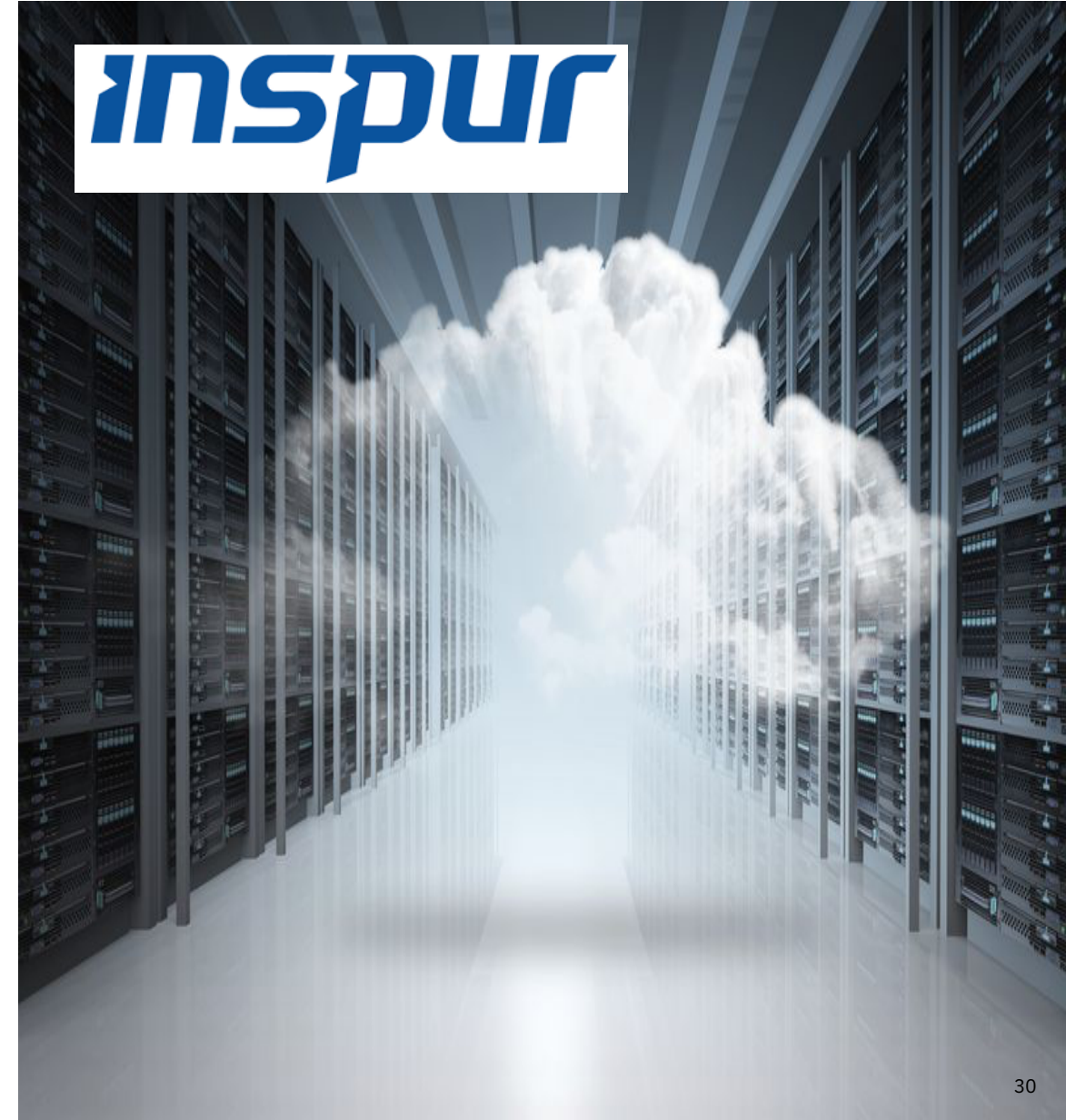
- Enterprise grade Platform as a Service
- Support across x86 and Power platforms
- Support for multiple development languages and runtimes

## Solution

- IBM Cloud Private, UrbanCode Deploy, MQ
- Open Source tools, innovation projects (Hyperledger)

## Benefits

- Increased speed of app development and deployment
- Platform flexibility



# Swiss government organization

## Business Needs

- Development of microservices applications in a cross-cloud architecture
- Management of workloads across multiple Hardware-platforms (e.g. Power, x86)

## Benefits

- Reduced costs of managing and maintaining their WebSphere environment
- Speed of public cloud combined with the security of private
- Flexibility of 3<sup>rd</sup> party cloud support
- Supported migration of applications leveraging IBM Transformation Advisor



# IBM Cloud Private - Editions

Community	Power Systems Entry for ICP	Cloud Native	Enterprise
<b>Use Case</b> Create cloud-native applications in a non-production environment	<b>Use Case</b> Low entry cost / 12-month term*. Available when ordered with Power servers.	<b>Use Case</b> Create cloud-native applications in a non-production environment	<b>Use Case</b> <ul style="list-style-type: none"><li>Modernize and optimize existing applications - enterprise data centers</li></ul>
<b>Platform</b> <ul style="list-style-type: none"><li>Kubernetes</li><li>Core services (Security, logging, monitoring, etc)</li><li>Catalog of containerized content</li></ul>			
	<b>IBM Enterprise Software</b> <ul style="list-style-type: none"><li>Microservice Builder</li><li>WebSphere Liberty</li><li>IBM SDK for node.js</li><li>Cloud Automation Manager</li></ul>	<b>IBM Enterprise Software</b> <ul style="list-style-type: none"><li>Microservice Builder</li><li>WebSphere Liberty</li><li>IBM SDK for node.js</li><li>Cloud Automation Manager</li></ul>	<b>IBM Enterprise Software</b> <ul style="list-style-type: none"><li>Everything in Cloud Native, plus:<ul style="list-style-type: none"><li>+ MQ Advanced (Containers)</li><li>+ WAS ND (VMs)</li><li>+ API Connect Professional (VMs)</li></ul></li></ul>
<ul style="list-style-type: none"><li>Limited use: 1 Master Node, 1 Cluster</li><li>Non production use</li><li>Non warranted, community support</li></ul>	<ul style="list-style-type: none"><li>Entitled for production use / HA</li><li>Support included</li><li>Single management cluster, 3 HA masters and 32 worker cores</li></ul>	<ul style="list-style-type: none"><li>Entitled for production use / HA</li><li>Support included</li></ul>	<ul style="list-style-type: none"><li>Entitled for production use / HA</li><li>Support included</li></ul>
Free	12 Month term	VPC per month	

\* after 12 months need to migrate to one of the ICP Editions



# Why IBM **Cloud** Private?

## Integrated DevOps & Management

Open DevOps Toolchain | Hybrid Cloud Management

## Cloud Optimized Software & Services

Middleware | Data | Analytics | Machine Learning | Blockchain

## Kubernetes-based Platform

Developer Productivity | Operational Efficiency

Catalog | Built-in Elasticity | Multi-tenant | Consistent Management

Open Technology | Runs anywhere

## Flexible Choice of Infrastructure

VMware | Openstack | Hardware

- **Single platform** for new cloud-native application development and optimization of existing applications
- **Staying current** with an integrated and secure open source platform - code drop every 3 months
- **Get IBM support** for your Kubernetes cluster to drive outcome and minimize risk
- **Runs on existing infrastructure** on-premises to address security, compliance, risk & cost
- **Portability & Open Ecosystem** to avoid vendor lock-in and provide a true hybrid cloud experience
- **Integrate within the enterprise and to public cloud** services using API connectivity & management

# Getting Started with Cloud

## *Cloud Adoption and Transformation*

Your cloud adoption journey is rooted in the seven **dimensions of digital transformation**



### 1 Culture + Organization

Culture that encourages innovation, aligns with business goals, and accelerates execution



### 3 Security + Compliance

Key considerations for holistic cloud operations, including risk, security and compliance



### 4 Emerging Innovation Spaces

Leverage, showcase and validate new and emerging technologies



### 6 Service Management + Operations

Cloud management framework, process and practice for operational environment



### 7 Data Science + Governance

Data science insights, governance frameworks and catalysts for cloud acceleration



### 2 Architecture + Technology

Overall cloud technology vision, considering desired state and enterprise goals for workload and data



### 5 Methodology

Agile practices for software planning, development, delivery, and operations

# Cloud Adoption - Further reads



The de facto guide to improving your enterprise with the cloud, created by distinguished members of our Solution Engineering team

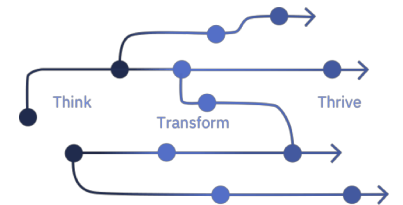


*Cloud-Native refresh for The Twelve-Factor App*  
<http://ibm.biz/BdYcRT>

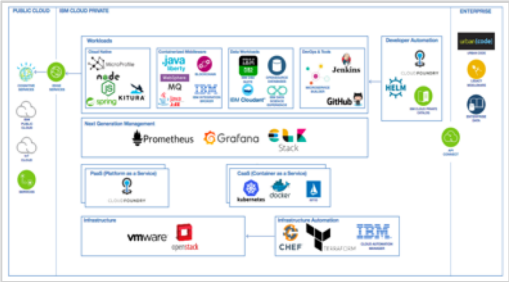
*IBM Cloud Private for Dummies*  
<http://ibm.biz/BdZedY>



*Cloud Adoption and Transformation Consultancy*  
<http://ibm.biz/BdYFCx>



# IBM Reference Architectures



*Private cloud reference architecture*  
<http://ibm.biz/BdYF9S>



*Microservices reference architecture*  
<http://ibm.biz/BdYF9e>



*IBM Cloud Garage Method*  
<http://ibm.biz/BdYF9u>



*DevOps reference architecture*  
<http://ibm.biz/BdYF9T>

# Learn more and try the IBM Cloud Private Community Edition

## Product website

<http://ibm.biz/IBM-Cloud-Private>

## Community edition

<https://hub.docker.com/r/ibmcom/icp-inception/>



<https://ibm.biz/BdZedY>

## Guided Demo

- Demo in 5 minutes
- Link: <https://ibm.biz/BdjSYK>

## Proof of Technology

- Three scenarios with guidance on Garage Method
- Link: <https://ibm.biz/BdjSYn>

## Proof of Concept

- Requests through IBM Cloud Sales representative





C'est fini, ça continue là:  
IBM Cloud Private