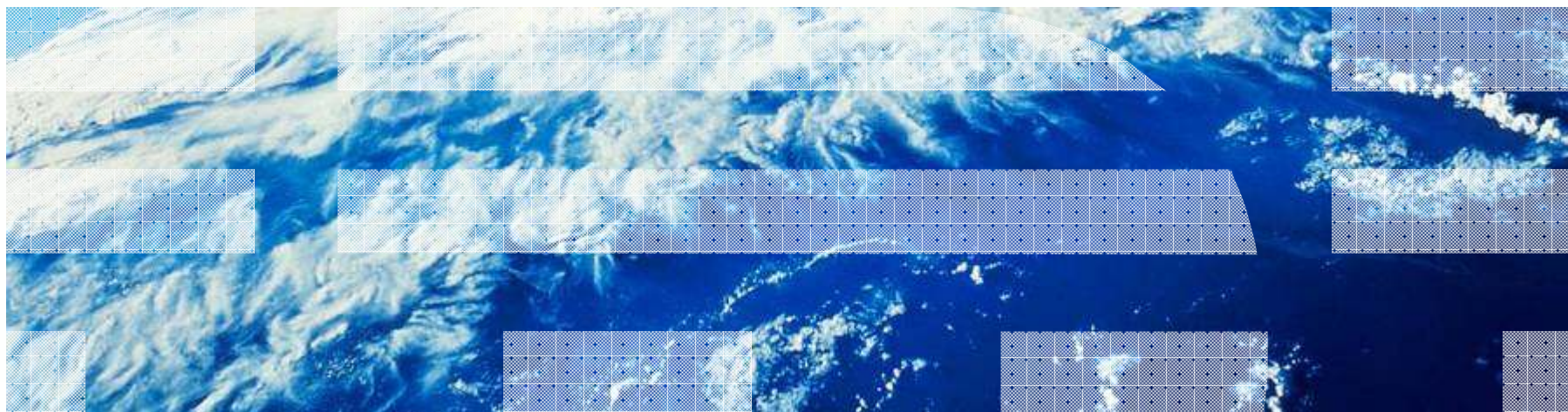


# CAST IRON

Une plateforme d'intégration complète pour connecter l'Entreprise avec le Cloud

Magali Boulet  
IT Specialist

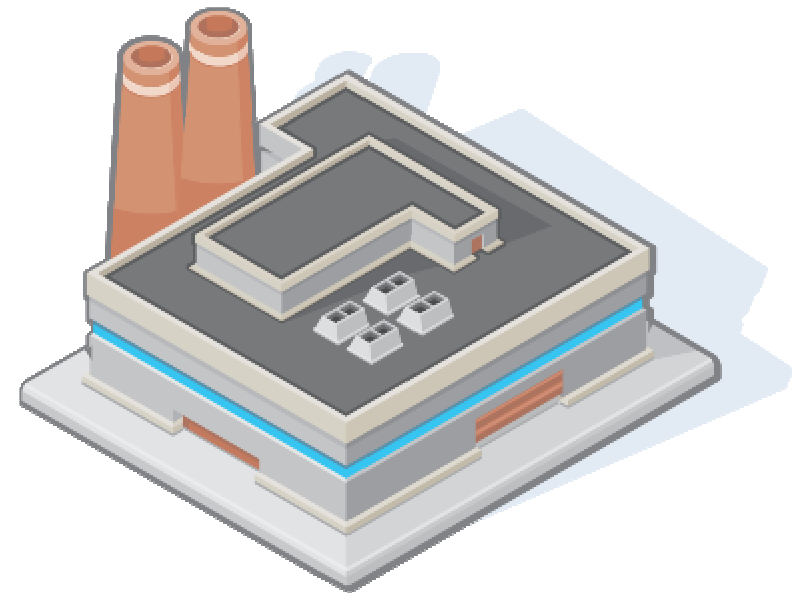
[magali.boulet@fr.ibm.com](mailto:magali.boulet@fr.ibm.com)



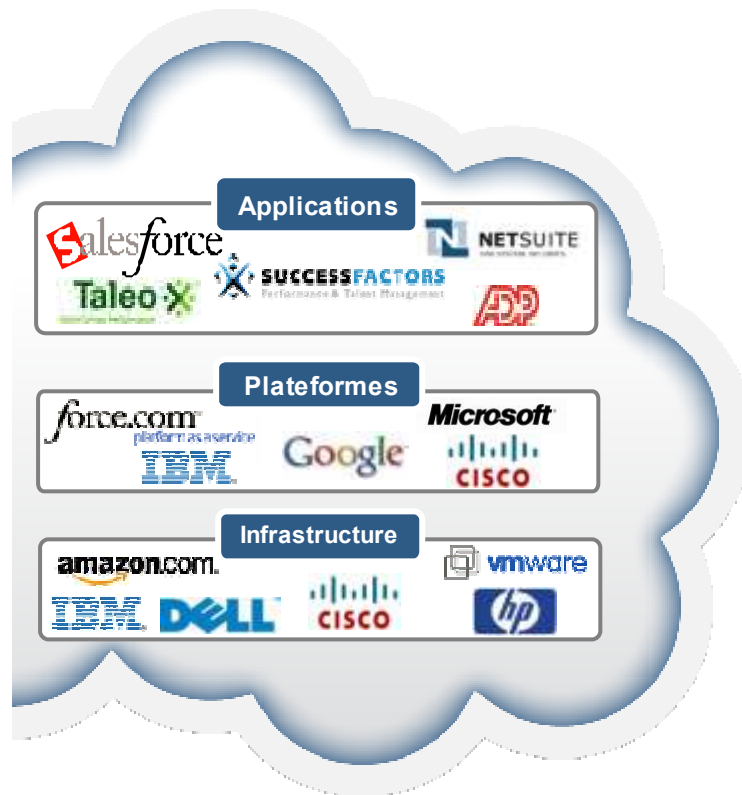
# Un Monde Hybride



## Enterprise

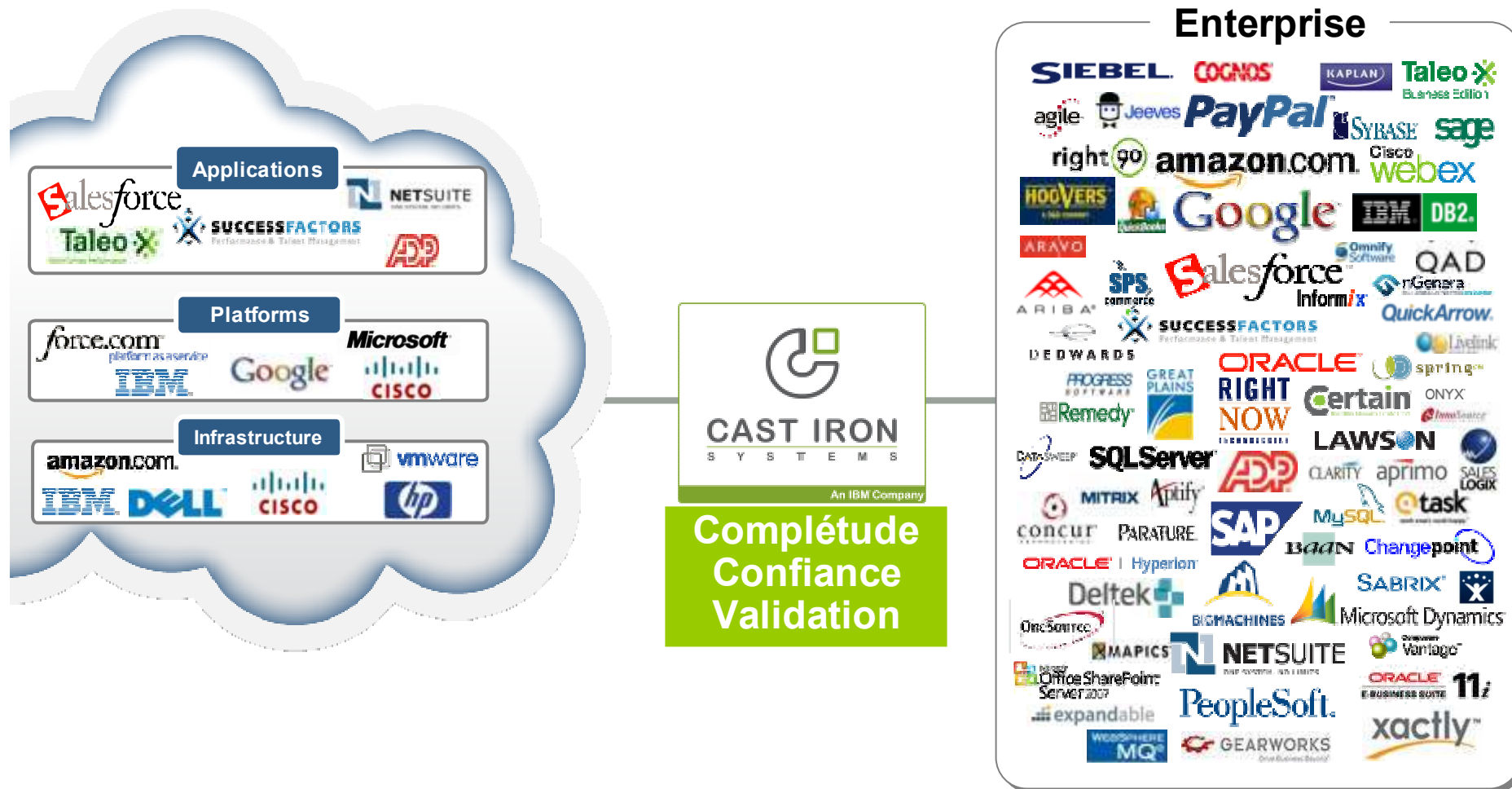


# Un Paysage Complexe



# Cast Iron Systems

## Une plateforme d'intégration complète pour connecter l'Entreprise avec le Cloud



# Complétude

**Complétude  
Confiance  
Validation**



## Flexibilité complète



Cast Iron Cloud2™



Physical Appliances



Virtual Appliances

## Connectivité totale



## Réutilisabilité complète



TIP Exchange



TIP Development Kit

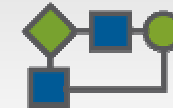


TIP Community

## Tous types de projets



UI Mashups



Process Integration

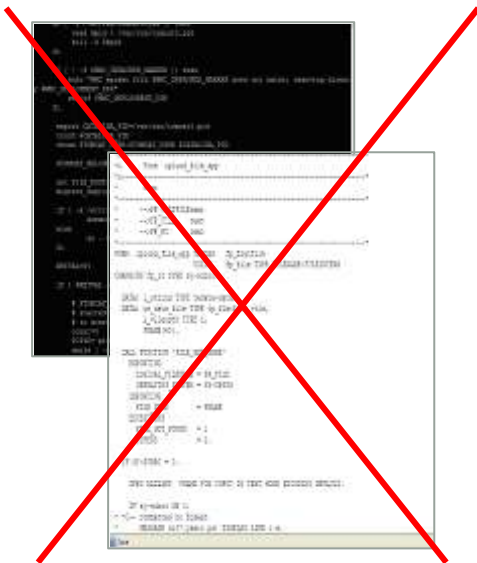


Data Migration

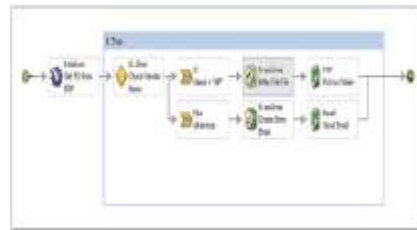
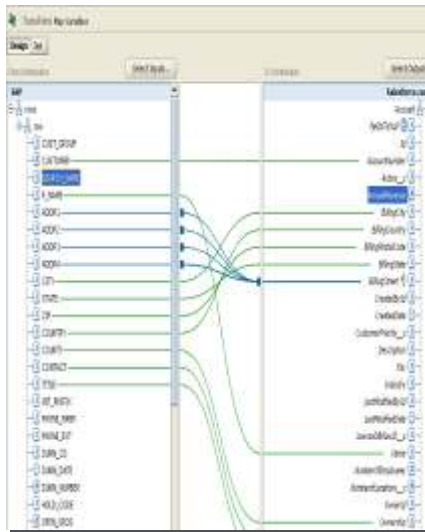


# Approche d'intégration Cast Iron

## Pas de Codage



## Configuration



## Modèles préconfigurés (TIPs)

Configuration

1. Introduction
2. Oracle Table Creation
3. Edit Configuration Properties
4. Verify Oracle connectivity
5. Update the Oracle Table Information
6. Map the Database fields
7. Sample Input Data
8. Verify Integration

## Un « TIP » ???

- Template Integration Project
- Projet Cast Iron déjà pré-configuré, avec un assistant pour guider la configuration
  - Projet déjà câblé à 80-90%
  - Accélération des temps de mise en oeuvre
- Quelques exemples :
  - Synchronisation des Contacts SAP 4.7 avec les contacts Siebel 8.1.1
  - Synchronisation des événements Salesforce.com avec Google Calendar
  - Synchronisation des comptes Oracle EBS 11i avec Salesforce.com 10.0
- La majorité des TIPs sont certifiés par IBM Cast Iron

# Exemples des modèles d'orchestrations pré-configurées

Search x

**Search for Template Integration Projects (TIPs)**  
 Search for TIPs by using keywords or by Filter.

Search By \_\_\_\_\_

Keywords  Filter  My TIPs

Keywords  Go

Hint: The keyword USECASES returns all TIPs under USECASES category.

Results \_\_\_\_\_

Name	Source	Target	Rating	Certified
T0002 - Salesforce Accounts to SAP Customers (Outbound Messaging)	Web Services	SAP(v4.7)		✓
T0193_SAPContactToSalesforceUsingBulkAPI	SAP(v4.7)	Salesforce Bulk API(v1.8)		✓
T0189_SAPCustomerToSFDCAccount_bulkAPI	SAP(v4.7)	Salesforce Bulk API(v1.8)		✓
T0094 - SAP Contacts To Siebel On Premise Contacts	SAP(v4.7)	Siebel On Premise(v8.1.1)		✓
T0093 - SAP Customers To Siebel On Premise Accounts	SAP(v4.7)	Siebel On Premise(v8.1.1)		✓
T0060 - SAP Materials To NetSuite Inventory Items	SAP(v4.7)	NetSuite(v2008.1)		✓
T0063 - SAP Materials To salesforce.com Products	SAP(v4.7)	salesforce.com(v10.0)		✓
T0086 - SAP Product Catalog To salesforce.com Price Book	SAP(v4.7)	salesforce.com(v10.0)		✓
T0091 - SAP Contact To NetSuite Contact	SAP(v4.7)	NetSuite(v2008.1)		✓
T0087 - SAP Customers To Oracle CRM On Demand Accounts	SAP(v4.7)	Oracle CRM On Demand(v15.0)		✓
T0090 - SAP Customers To NetSuite Customers	SAP(v4.7)	NetSuite(v2008.1)		✓
T0088 - SAP Contact To Oracle CRM On Demand Contact	SAP(v4.7)	Oracle CRM On Demand(v15.0)		✓
T0084 - SAP Contact To salesforce.com Contact	SAP(v4.7)	salesforce.com(v10.0)		✓
T0068 - SAP Product Catalog to Oracle CRM On Demand Products	SAP(v4.7)	Oracle CRM On Demand(v15.0)		✓
T0037 - SAP Customers To Salesforce Accounts	SAP(v4.7)	salesforce.com(v10.0)		✓
T0100 - Synchronize Customers from SAP to Salesforce.com	SAP(v4.7)	salesforce.com(v10.0)		✓
T0197_SAPUpdateToChatter	SAP	Salesforce Chatter(v1.8)		✓
Mashup - SAP Order History	SAP	HTTP		
T0053 - Salesforce Opportunities To SAP Sales Orders	salesforce.com(v10.0)	SAP(v4.7)		✓
T0003 - Salesforce Accounts To SAP Customers (Get Updated)	salesforce.com(v10.0)	SAP(v4.7)		✓
T0071 - Oracle CRM On Demand Accounts To SAP Customers	Oracle CRM On Demand(v15.0)	SAP(v4.7)		✓

Details

Project Name:

Creator:

Created:

Path:

Category:

Avg. Rating:

Description

Patterns:

Project Size(Kb):

Last Modified:

Created With Studio Version:

Downloaded:

Version:

Searching ... completed.

Download Cancel Help



Complétude  
Confiance  
Validation

salesforce.com<sup>®</sup>  
Success On Demand.<sup>™</sup>

ORACLE<sup>®</sup>

Google<sup>™</sup>

Taleo

IBM<sup>®</sup>

CISCO

amazon.com<sup>®</sup>

Microsoft<sup>®</sup>

SAP<sup>®</sup>

vmware<sup>®</sup>

SuccessFactors   
Business Execution Software

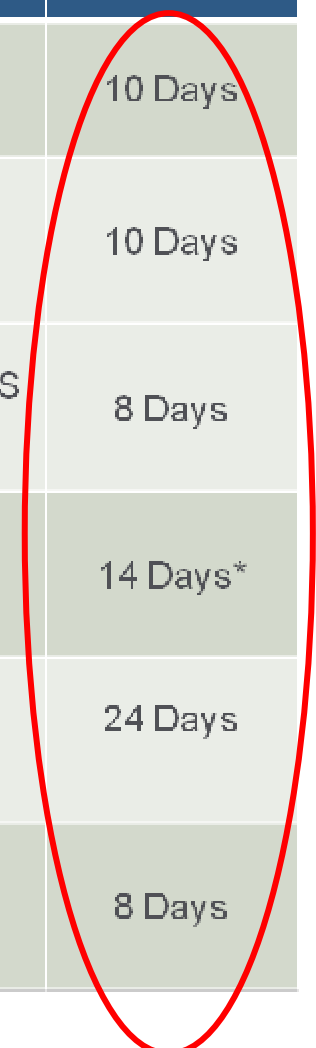
ADP<sup>®</sup>

Complétude  
Confiance  
Validation



# Résultats Rapides – Intégration en quelques JOURS

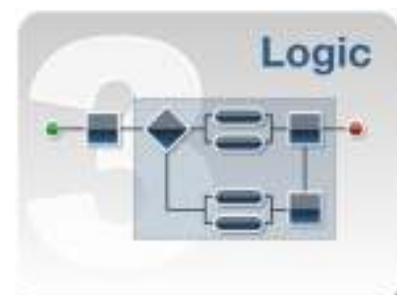
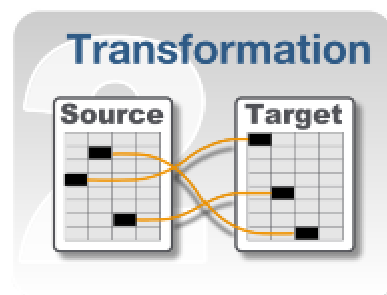
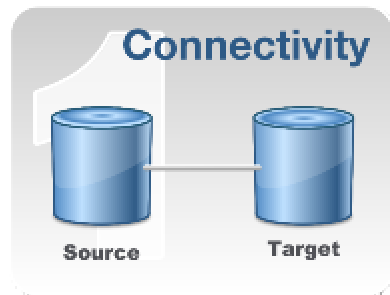
Cloud App	Customer	Project	Duration
Salesforce.com	AmerisourceBergen Specialty Group	SFDC – Data Warehouse Customer Master Integration	10 Days
Salesforce.com	Allianz	SFDC – Data Warehouse Customer Master Integration	10 Days
Oracle	xtg SCHMIDT TECHNOLOGY GROUP	Oracle CRM On Demand, Oracle EBS Customer Master	8 Days
Taleo	A Leading Commodities Exchange	Taleo – PeopleSoft Job Requisition Sync	14 Days*
NetSuite	salary.com	SFDC– NetSuite Billing and Invoice Visibility	24 Days
Custom	SCHUMACHER GROUP	SFDC – Custom Hurricane Tracking	8 Days



# Vue générale de la solution



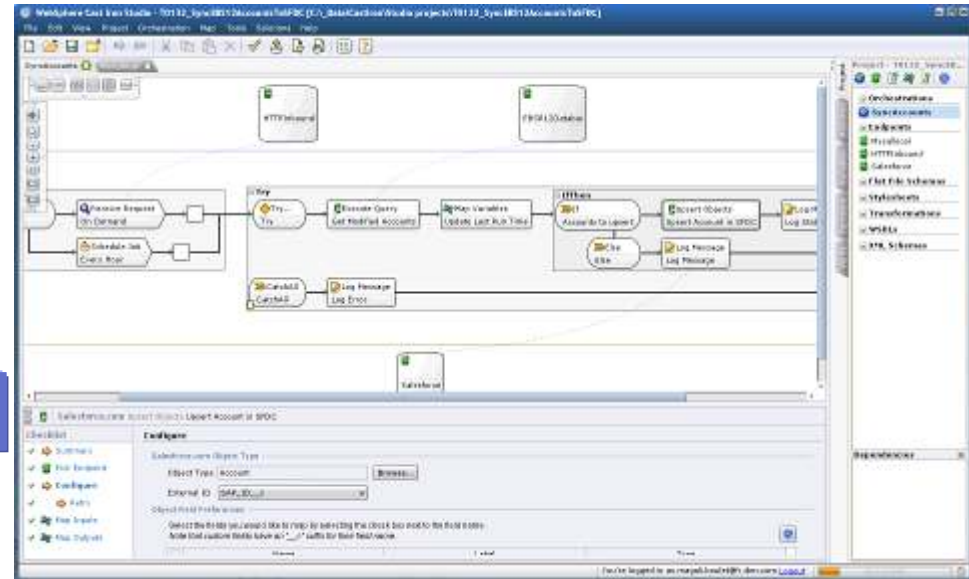
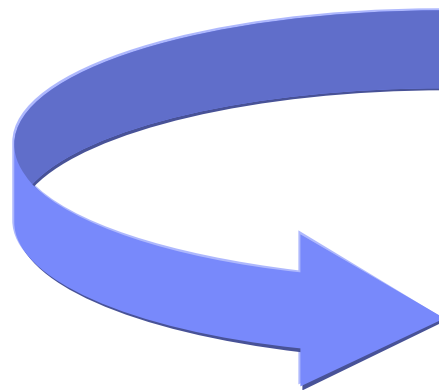
## Fonctionnalités Cast Iron



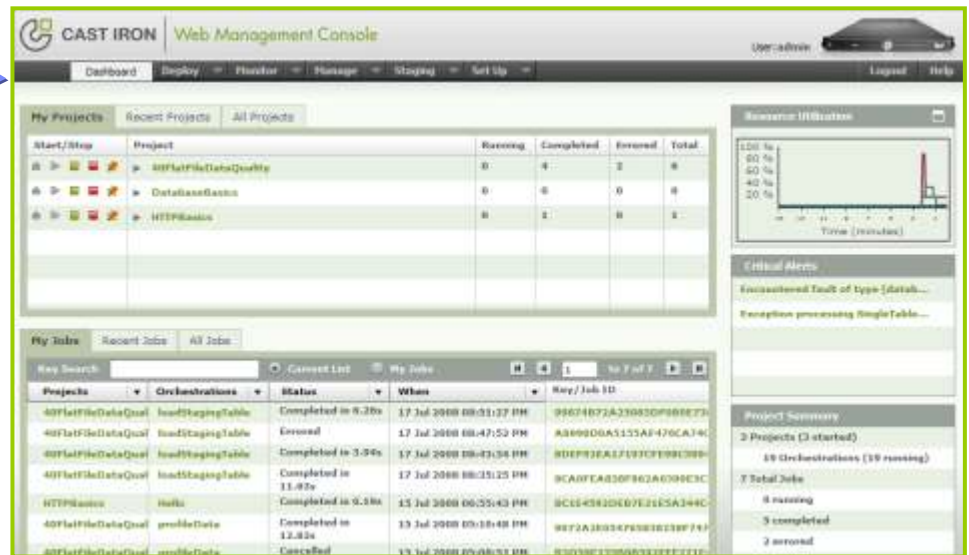
# Deux composants

- Cast Iron Studio
  - IDE de configuration des orchestrations

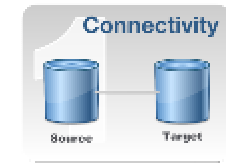
Déploiement



- Cast Iron Server
  - Moteur d'exécution des orchestrations



# Endpoints



Cast Iron Studio - SF [C:\\_Data\CastIron\Studio projects\SF]

File Edit View Project Orchestration Map Tools Solutions Help

Salesforce

Salesforce.com Customer Login

User Name: magali.boulet@fr.ibm.com

Password: [Redacted]

CRMOAccountWSInvoke

Type: Invoke Location: Remote

WSDL Name: OracleCRMAccount

Service: Account Port: Default

Location: OracleCRMWebServiceURL

Provide Transport: HTTP

Part: Part

Log in

Log into the Server as an Anonymous User

Log into the Server with User Name and Password

Authentication: Basic Realm: [Redacted]

User Name: Password: [Redacted]

Security

Basic

Client Certificate Alias Name: Factors Supplied Identity

Connection Pool Options

Maximum Connections: 25

Connection Timeout

Time out after: 300 second(s) when establishing a connection to the Endpoint.

Proxy

Connect via a Proxy Server

Authentication: Basic Realm: [Redacted]

Host Name: Port: [Redacted]

MySQL

Database

Database Type: MySQL

Database Name: DBName

Network Location

Server: DBHost Port: DBPort

User Name: DBUser Password: DBPassword

Additional Parameters

Parameter Name	Parameter Value
MaxPooledStatements	50

SugarCRM

Connection Details

SugarCRM URL: http://demo.sugaropencloud.eu/XXXXXXXX/test/service/v2/soap.php

User Name: will

Password: [Redacted]

Application Name: sugarCRM

Version: 2.0

Test Connection

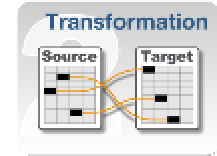
Secure Client Authentication

Endpoint Configuration

Endpoint Runs Behind Firewall Secure Connector Name: [Redacted]

Test Connection

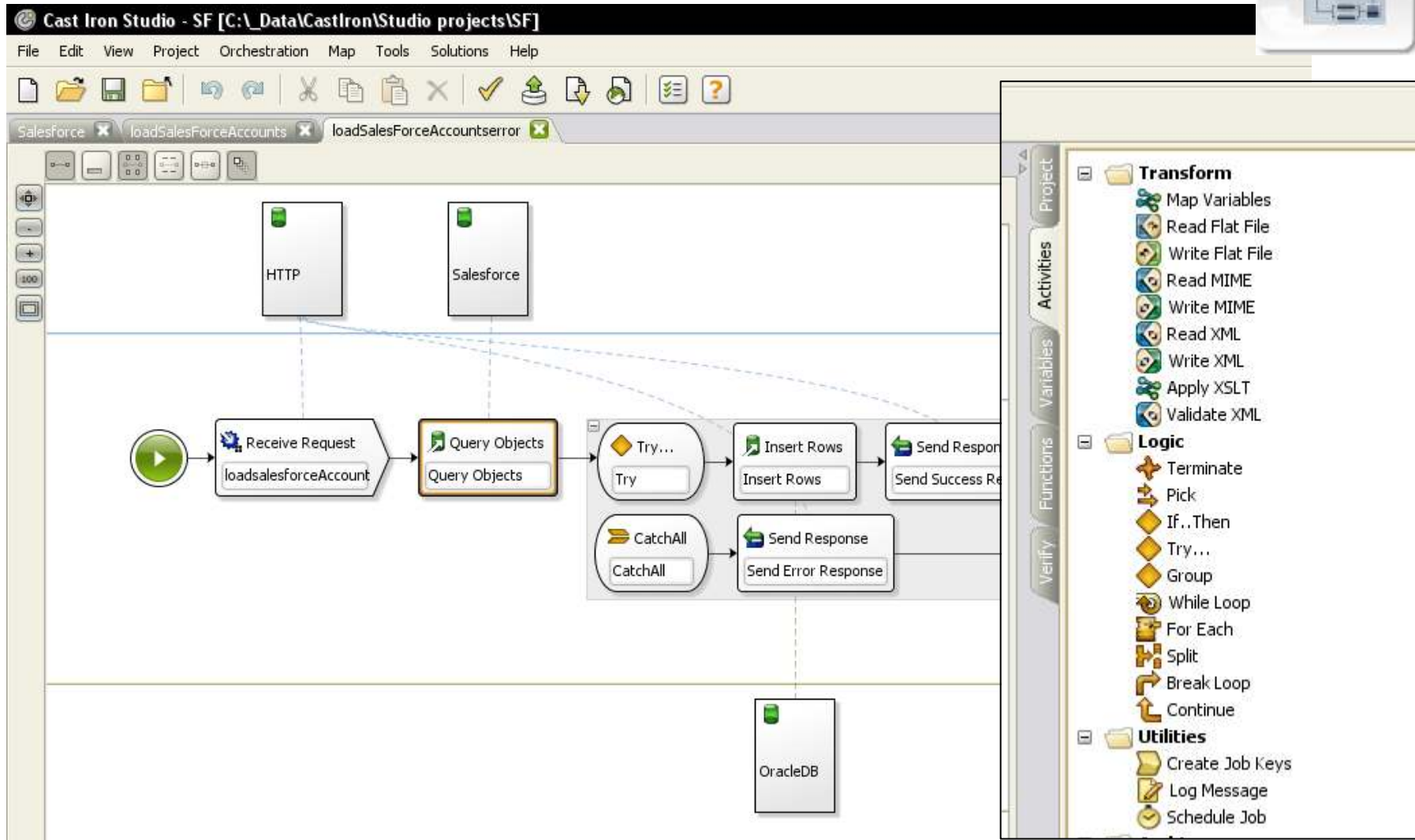
# Transformation (mapping de message)



The screenshot displays the IBM WebSphere Business Process Manager interface for configuring a message transformation. The main window is titled "Salesforce.com Upsert Objects Upsert Product in SFDC".

- Checklist:** A vertical list of tasks: Summary, Pick Endpoint, Configure, Retry, Map Inputs (highlighted), and Map Outputs.
- Map Inputs:** A section with "Design" and "Test" tabs. It shows a tree structure for "EBS11ModifiedProducts" with nodes for "rows", "row", "occurrence", "ACTIVE", "PRODUCT\_CODE", "DESCRIPTION", "PRODUCT\_FAMILY", and "PRODUCT\_NAME". A "Select Inputs..." button is present.
- Functions:** A large list of transformation functions categorized into "String", "Mathematical", and "Miscellaneous". The "String" category includes functions like Align Center, Concatenate, Format Number, Length, Lowercase, Padding String, Replace, Starts With, Substring, Substring After, Substring Before, Trim, and Uppercase. The "Mathematical" category includes Absolute Value, Add, Average, Ceiling, Count, Divide, Floor, Maximum, Minimum, Modulo, Multiply, Round, Subtract, and Sum.
- objects:** A tree structure on the right showing the target message structure with nodes for "objects", "Product2", "occurrence", "Name", "exists", "ProductCode", "exists", "nil", "Description", "exists", "nil", "IsActive", "exists", "Family", "exists", "nil", "externalID\_c", and "nil".

# Traitement de flux





# Traitement de flux : activités par endpoint 1/2

- Transform
- Logic
- Utilities
- Archives
- Data Quality
- Database
- Domino
- Email
- Force.com Bulk API
- FTP
- HTTP
- JDE
- JMS
- MQ
- NetSuite
- OracleCRM
- PeopleSoft
- RightNow
- Salesforce.com
- SAP
- Siebel
- SugarCRM
- Taleo
- Web Services

- Transform
  - Map Variables
  - Read Flat File
  - Write Flat File
  - Read MIME
  - Write MIME
  - Read XML
  - Write XML
  - Apply XSLT
  - Validate XML

- Logic
  - Terminate
  - Pick
  - If..Then
  - Try...
  - Group
  - While Loop
  - For Each
  - Split
  - Break Loop
  - Continue

- Utilities
  - Create Job Keys
  - Log Message
  - Schedule Job
- Archives
  - Archive
  - Unarchive

- Data Quality
  - Filter and Profile
  - Lookup
  - Sort
  - Merge
- Database
  - Execute Query
  - Get Inserted Row
  - Insert Rows
  - Get Updated Rows
  - Update Rows
  - Get Deleted Rows
  - Delete Rows
  - Poll Table
  - Call Procedure

- FTP
  - Poll Directory
  - Put File
  - Get File
  - Delete File
  - List Files
  - Rename File
- HTTP
  - Receive Request
  - Send Response
  - Post Request

- Domino
  - Create Documents
  - Update Documents
  - Delete Documents
  - Retrieve Documents
  - Get Created Documents
  - Get Updated Documents
  - Get Deleted Documents
- Email
  - Get Email
  - Send Email

- JMS
  - Poll Message
  - Send Message
  - Get Message
  - Subscribe Message
  - Publish Message
- MQ
  - Get Message
  - Put Message
  - Poll Message

- Web Services
  - Invoke Service
  - Provide Service
  - Send Reply
  - Send Reply With Fault

# Traitement de flux : activités par endpoint 2/2

- + Transform
- + Logic
- + Utilities
- + Archives
- + Data Quality
- + Database
- + Domino
- + Email
- + Force.com Bulk API
- + FTP
- + HTTP
- + JDE
- + JMS
- + MQ
- + NetSuite
- + OracleCRMOD
- + PeopleSoft
- + RightNow
- + Salesforce.com
- + SAP
- + Siebel
- + SugarCRM
- + Taleo
- + Web Services

<ul style="list-style-type: none"> <li>[-] <b>Salesforce.com</b> <ul style="list-style-type: none"> <li> Poll Updated Objects</li> <li> Get Updated Objects</li> <li> Poll Deleted Objects</li> <li> Get Deleted Objects</li> <li> Create Objects</li> <li> Update Objects</li> <li> Upsert Objects</li> <li> Delete Objects</li> <li> Undelete Objects</li> <li> Retrieve Objects</li> <li> Query Objects</li> <li> Search Objects</li> <li> Convert Lead</li> <li> Merge Objects</li> <li> Get User Information</li> <li> Get Server Timestamp</li> <li> Send Email</li> <li> Set Password</li> <li> Reset Password</li> </ul> </li> <li>[-] <b>RightNow</b> <ul style="list-style-type: none"> <li> Create Object</li> <li> Get Object</li> <li> Destroy Object</li> <li> Move Object</li> <li> Search Object</li> <li> Update Object</li> <li> SQLGetInt</li> <li> SQLGetStr</li> <li> SQLGetTime</li> <li> Lookup ID</li> </ul> </li> <li>[-] <b>JDE</b> <ul style="list-style-type: none"> <li> Invoke Business Function</li> </ul> </li> </ul>	<ul style="list-style-type: none"> <li>[-] <b>Force.com Bulk API</b> <ul style="list-style-type: none"> <li> Batch Insert</li> <li> Batch Update</li> <li> Batch Upsert</li> <li> Batch Delete</li> <li> Get Batch Status</li> <li> Get Batch Results</li> </ul> </li> <li>[-] <b>SugarCRM</b> <ul style="list-style-type: none"> <li> Upsert Object</li> <li> Get Reports</li> <li> Delete Object</li> <li> Get Object</li> <li> Query Object</li> <li> Get ServerInfo</li> <li> Get UserInfo</li> <li> Search</li> <li> Set Relationship</li> <li> Delete Relationship</li> <li> Get Relationship</li> </ul> </li> <li>[-] <b>SAP</b> <ul style="list-style-type: none"> <li> Invoke RFC</li> <li> Invoke BAPI</li> <li> Receive IDOC</li> <li> Send IDOC</li> </ul> </li> <li>[-] <b>Siebel</b> <ul style="list-style-type: none"> <li> Create Objects</li> <li> Update Objects</li> <li> Delete Objects</li> <li> Query Objects</li> <li> Execute Business Service</li> <li> Get Created Objects</li> <li> Get Updated Objects</li> <li> Get Deleted Objects</li> </ul> </li> </ul>	<ul style="list-style-type: none"> <li>[-] <b>NetSuite</b> <ul style="list-style-type: none"> <li> Add Records</li> <li> Update Records</li> <li> Upsert Records</li> <li> Delete Records</li> <li> Get Records</li> <li> Initialize Records</li> <li> Attach Records</li> <li> Detach Records</li> <li> Search Records</li> </ul> </li> <li>[-] <b>PeopleSoft</b> <ul style="list-style-type: none"> <li> Receive Message</li> <li> Get Component Interface</li> <li> Insert Component Interfa</li> <li> Find Component Interface</li> <li> Update Component Interf</li> <li> Delete Component Interf.</li> <li> Create Component Interf</li> </ul> </li> <li>[-] <b>Taleo</b> <ul style="list-style-type: none"> <li> Create Attachments</li> <li> Create Objects</li> <li> Get Objects</li> <li> Search Objects</li> <li> Delete Objects</li> <li> Set Associated Users</li> <li> Set Binary Resumes</li> <li> Submit Candidates</li> <li> Update Attachments</li> <li> Update Objects</li> <li> Upsert Objects</li> </ul> </li> </ul>	<ul style="list-style-type: none"> <li>[-] <b>OracleCRMOD</b> <ul style="list-style-type: none"> <li> Insert Object</li> <li> Update Object</li> <li> Query Object</li> <li> Delete Object</li> </ul> </li> </ul>
---	---	---	---

# Web Management Console (WMC)

## Dashboard



CAST IRON Web Management Console

Administrator (admin) Settings Help Log Out

Home: Dashboard

Utilization

Repository

Logs

Security

Network

System

**Project Configurations**

Configurations Filter: All

Configuration	Running	Completed	Errored	Total	Actions
DB2_Replicator_to_SalesForce (Undeployed)	0	0	0	0	[Icons]
Test17_SAPCustomerToFOCAccountsPH (Running)	0	0	0	0	[Icons]
SAPSFDCAccSync (Running)	0	0	0	0	[Icons]
Test17_SAPCustomerToFOCAccounts (2 of) (Running)	0	2	0	2	[Icons]
WebServiceBusiness (Running)	0	3	0	3	[Icons]
getStockQuo000 (Running)	0	3	0	3	[Icons]

**Results**

Job Filter: All Key Search:

Configurations	Orchestrations	Status	When	Key/Job ID
Test17_SAPCustomerToSFC_SAPSFDCAccSync		Completed In 1.82s	05/23/2011 02:21:03 PM	9C02082D4521051A5BC09D0190C640F1
WebServiceBusiness	getStockQuo000	Completed In 5.58s	05/23/2011 02:21:35 PM	8B7945634E0ECP6A8448E18CA1B74CA9
WebServiceBusiness	getStockQuo000	Completed In 3.71s	05/23/2011 02:20:57 PM	939EAF707DFBAE178708BE088D4289
WebServiceBusiness	getStockQuo000	Completed In 7.43s	05/23/2011 02:17:15 PM	A62B101B05D42F03CAD05C31CA5246E3
Test17_SAPCustomerToSFC_SAPSFDCAccSync		Completed In 4.87s	05/23/2011 02:57:18 PM	8B202DF064C94C8BA2D6DF8E838A548

Export Settings

Page 1 of 1

Last refreshed: 05/23/2011 02:24:11 PM GMT+0200

**Resource Utilization**

100%  
80%  
60%  
40%  
20%

Time (minutes)

**Critical Alerts**

Authentication failure for user: \*\*\*\*, from host: abde8  
Authentication failure for user: \*\*\*\*, from host: abde8  
Start of Orchestration configuration: rresflood@1.1.0/Def  
Start of Orchestration configuration: rresflood@1.1.0/Def

**Summary**

4 Configurations (5 started)

4 Orchestrations (3 running)

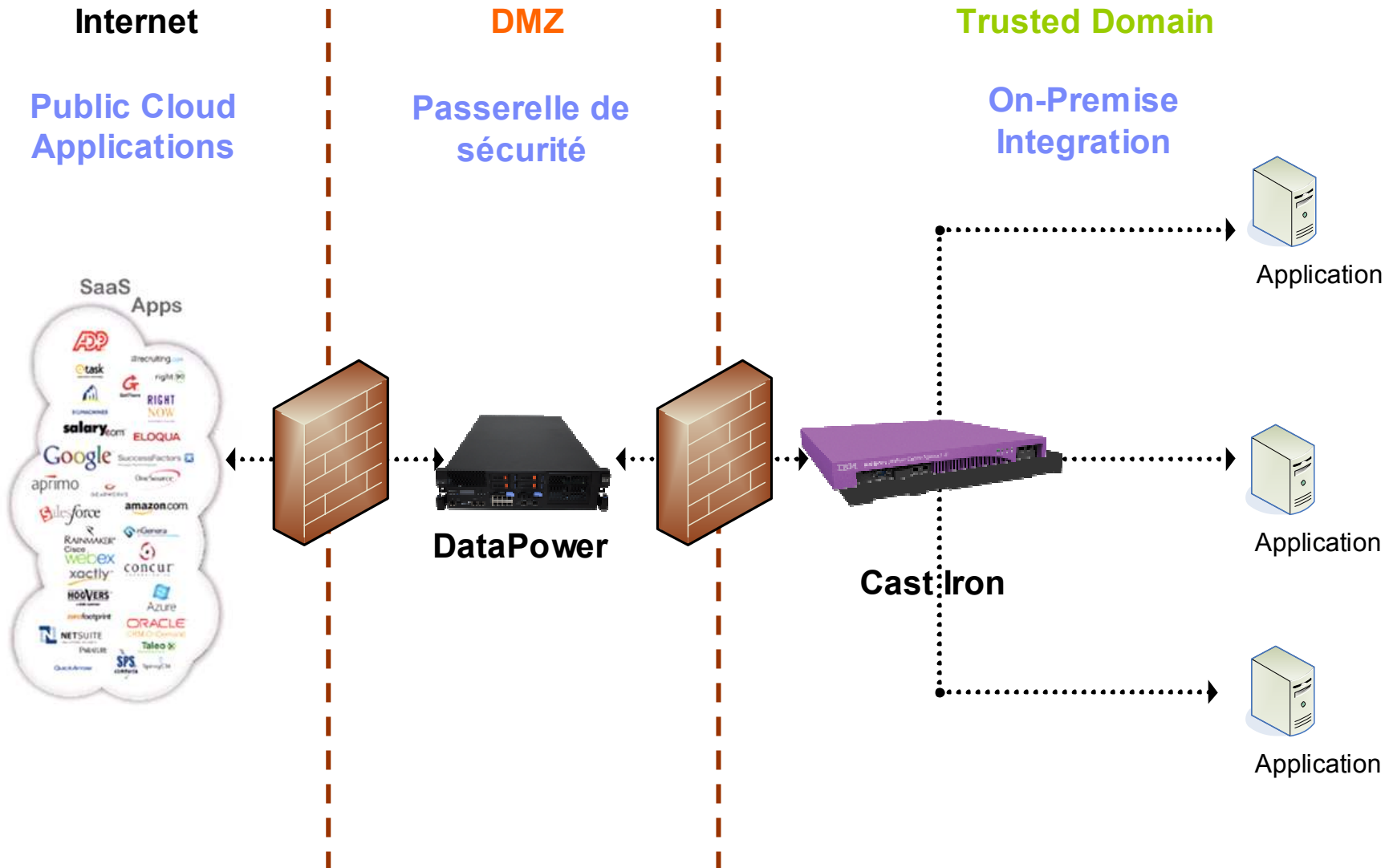
3 Jobs

0 running

5 completed

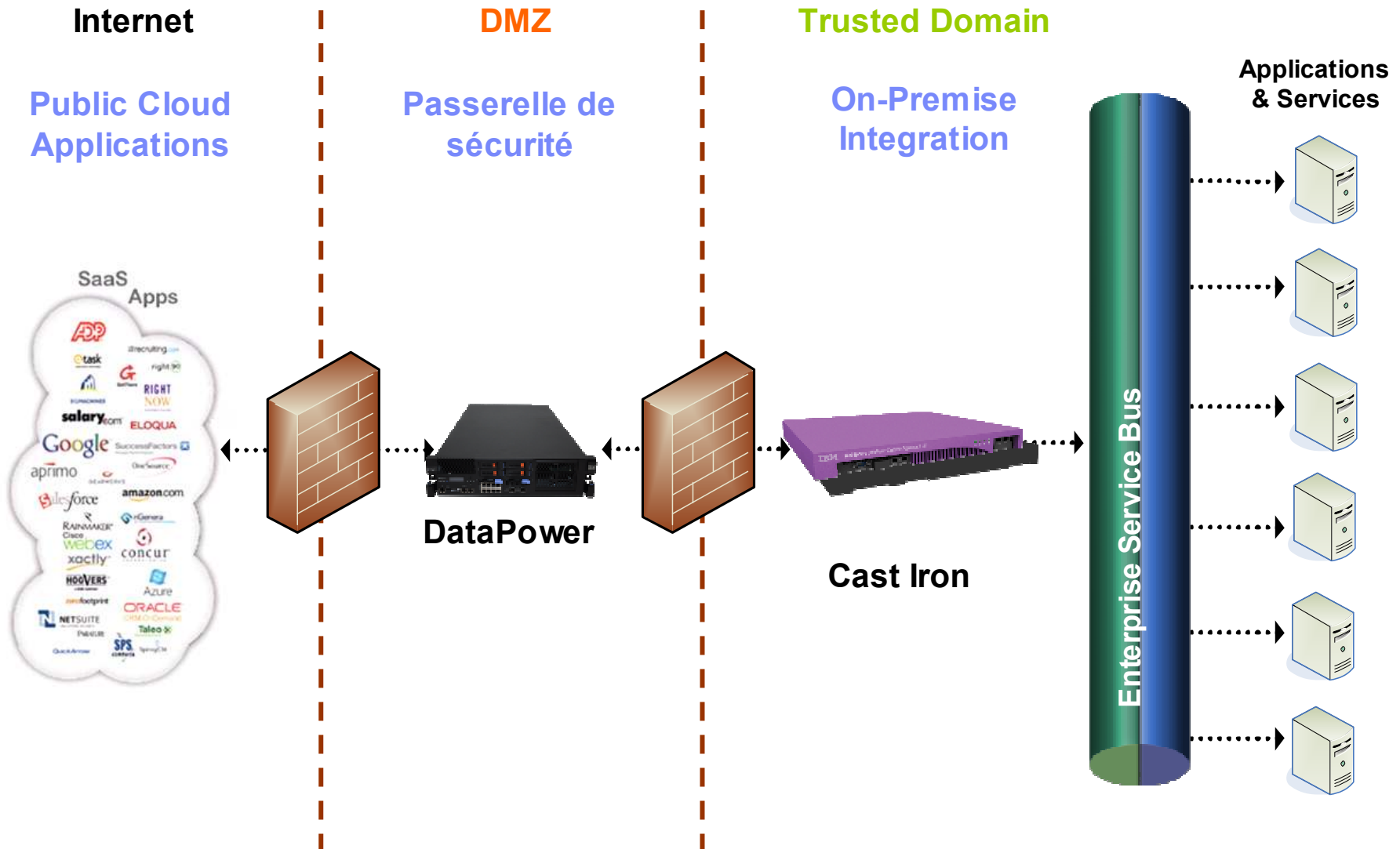
0 errored

# Déploiement Cast Iron On-Premise



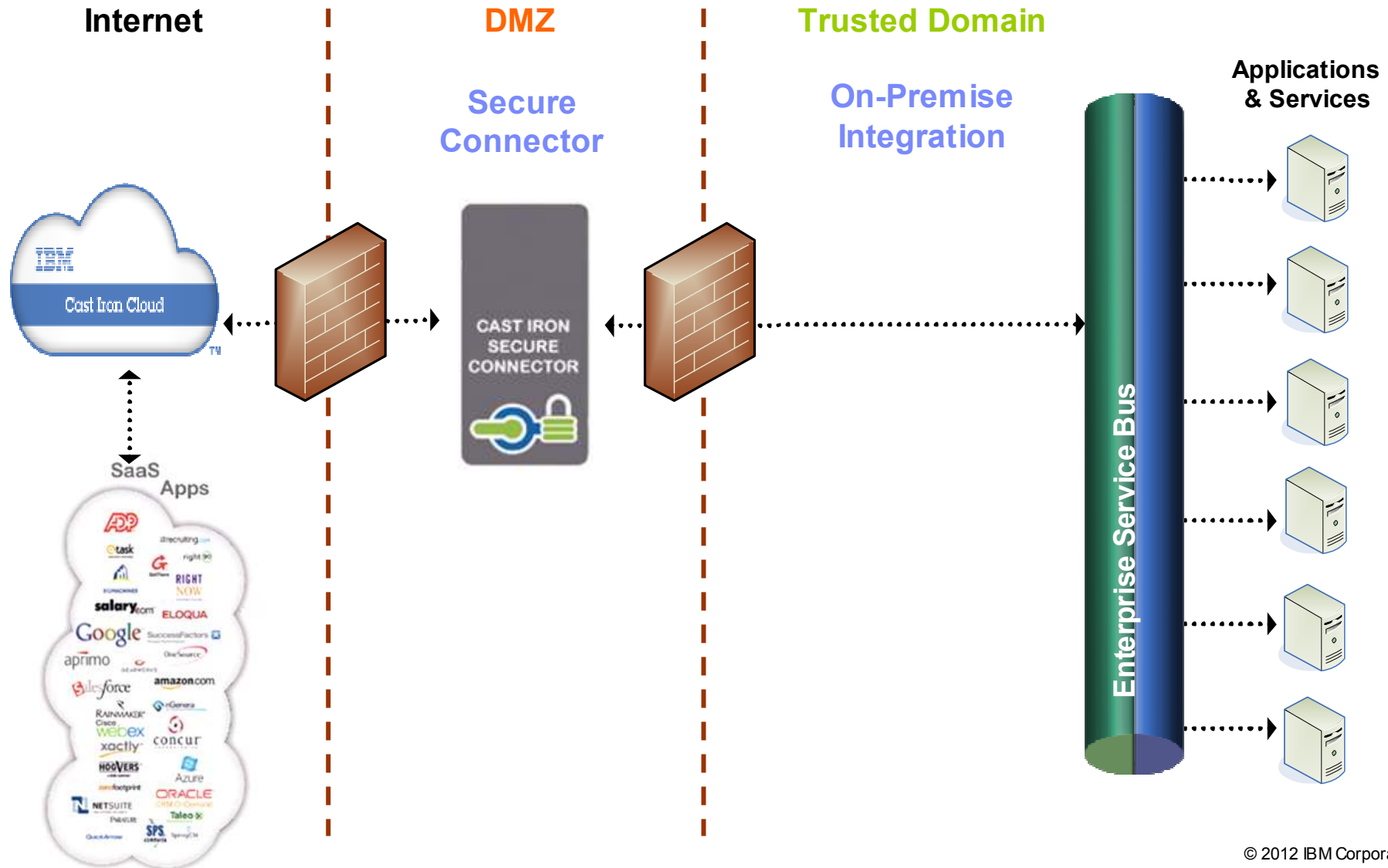
# Déploiement Cast Iron On-Premise

## L'ESB vers le Cloud



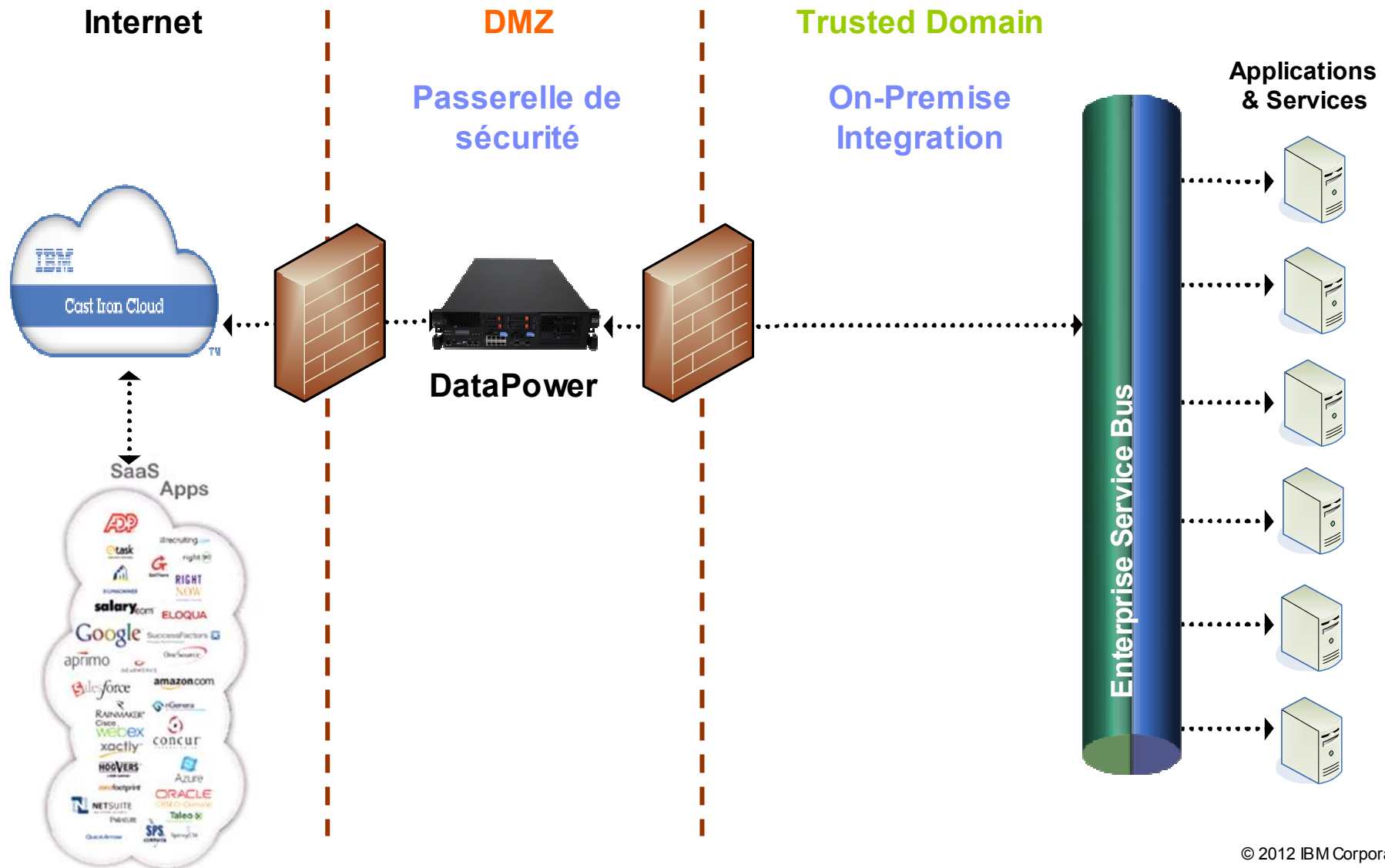
# Déploiement Cast Iron en Cloud

## L'ESB vers le Cloud



# Déploiement Cast Iron en Cloud

## L'ESB vers le Cloud



# Cast Iron pour les grandes et petites entreprises

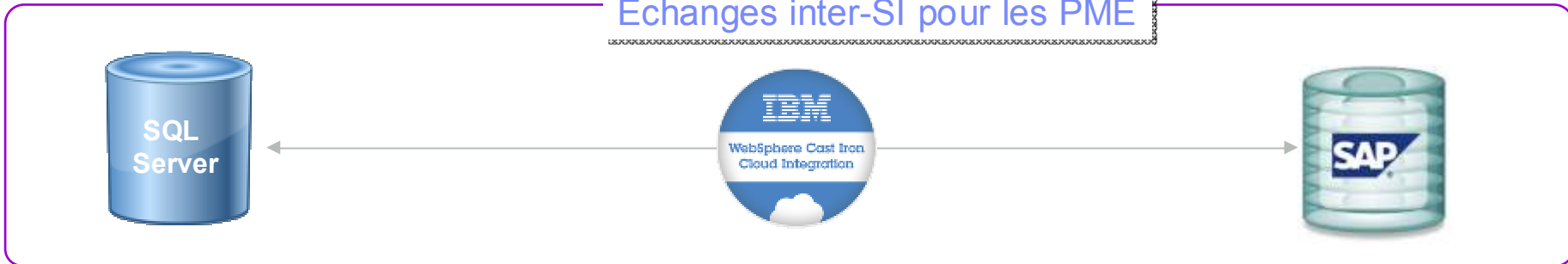
De cloud à cloud



De cloud à l'entreprise



Echanges inter-SI pour les PME



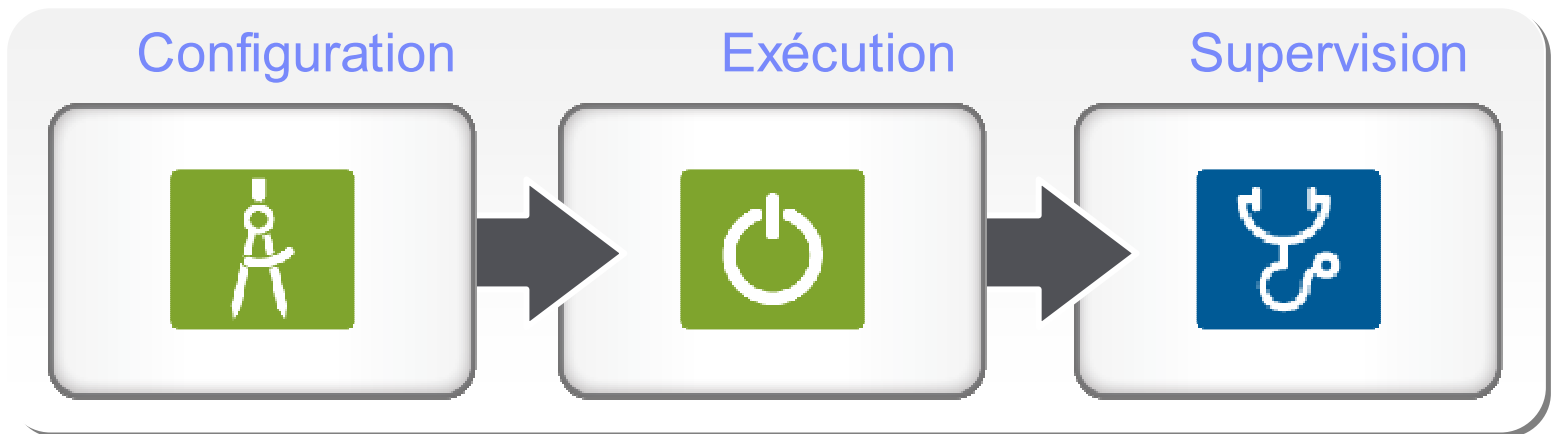


# Démonstration

**Quoi**

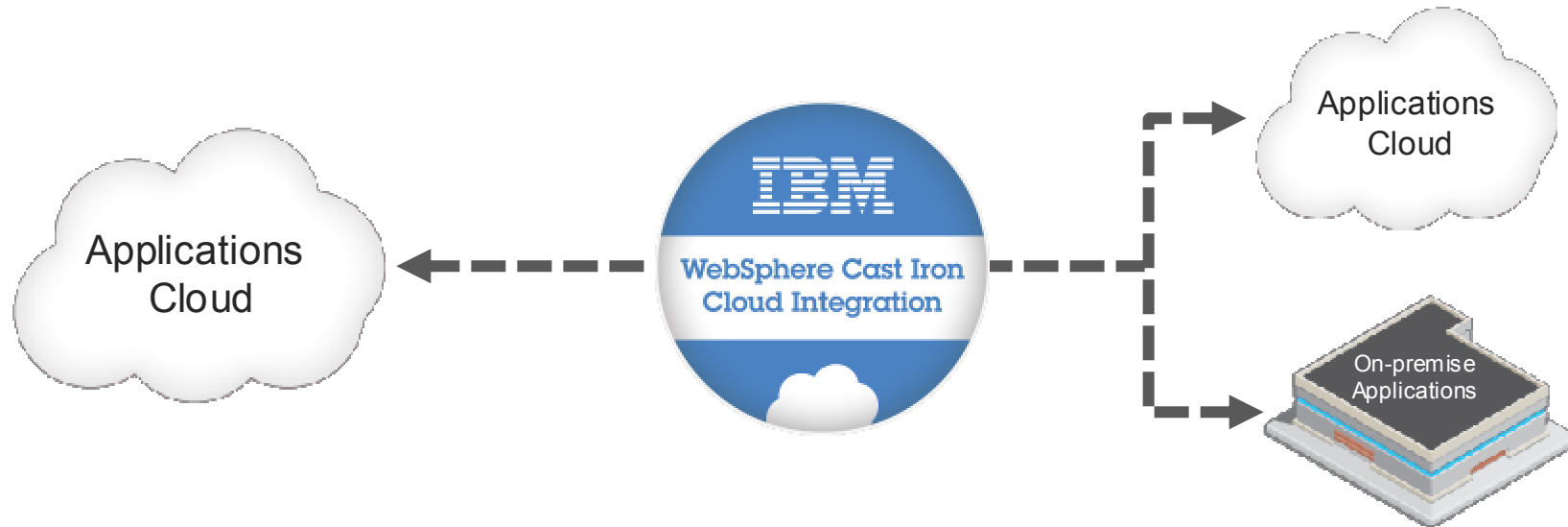





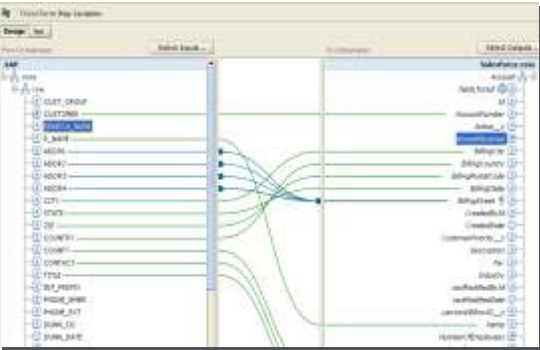
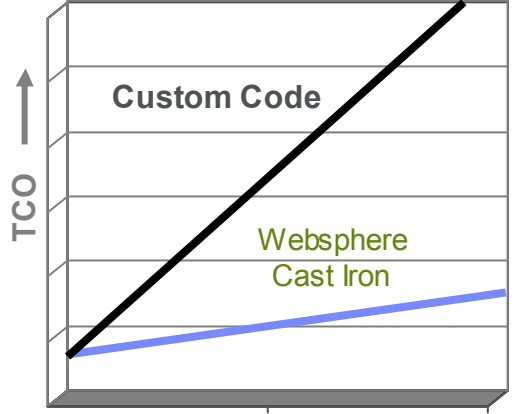
**Comment**



# WebSphere Cast Iron Integration

Intégrer le Cloud avec les applications On-Premise en JOURS



Flexible	Rapide	Rentable
 <p>Multi-tenant IBM Cast Iron Cloud</p> <p>Virtual appliances (VMware)</p>  <p>Physical appliances (IBM)</p> 	<p>Templates (TIPs)</p> 	 <p>TCO ↑</p> <p>Custom Code</p> <p>WebSphere Cast Iron</p>

## Pour aller plus loin

- Assistez à un atelier technique gratuit 'Proof of Technology'
- Redbooks
  - *Connect Cloud and On-premise Applications Using IBM WebSphere Cast Iron Integration*  
<http://www.redbooks.ibm.com/abstracts/redp4674.html?Open>
  - *Getting Started with IBM WebSphere Cast Iron Cloud Integration*  
<http://www.redbooks.ibm.com/abstracts/sg248004.html?Open>
- Site public <http://www-01.ibm.com/software/integration/cast-iron-cloud-integration/>
- IMPACT 2012 <http://www-01.ibm.com/software/websphere/events/impact/index.html>

# Questions - Réponses

