

Executive Summary

ABC Corporation
December 2003 - February 2004
Time frame 08.00 - 17.30

SWEDEN (10-ABCDE)
9406 820-2395/1521 CPU(s) 1
Internal memory in MB 1024
Disk Capacity in GB 67

Processor - Interactive Capacity



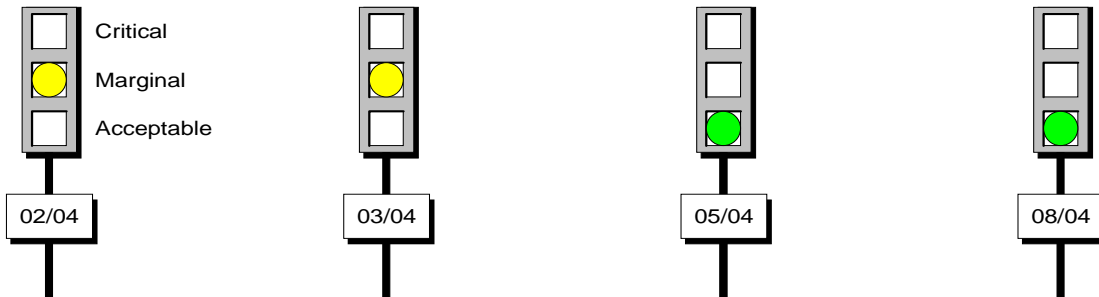
Processor - System+Interactive



Processor - Total



Disk Space

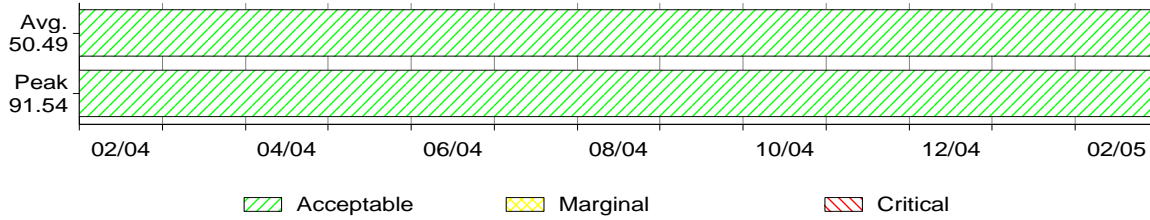


Management Summary

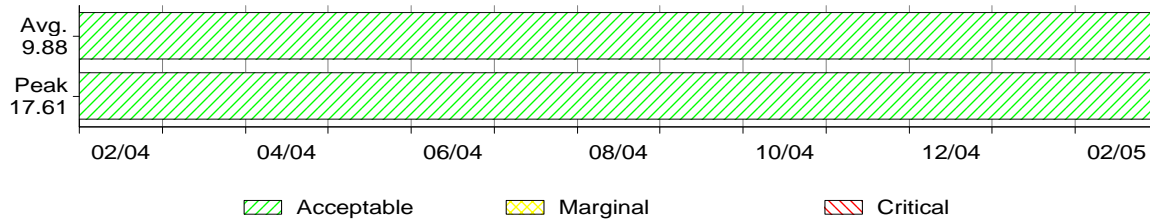
ABC Corporation
December 2003 - February 2004
Time frame 08.00 - 17.30

SWEDEN (10-ABCDE)
9406 820-2395/1521 CPU(s) 1
Internal memory in MB 1024
Disk Capacity in GB 67

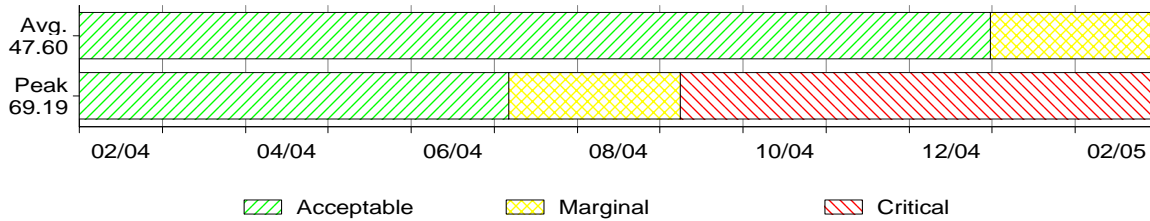
Processor - Interactive Capacity



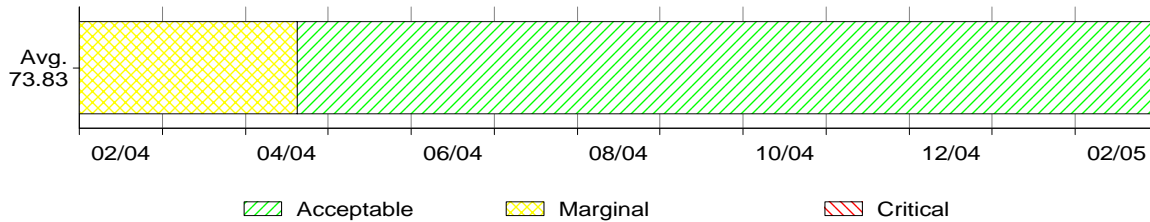
Processor - System+Interactive



Processor - Total



Disk Space

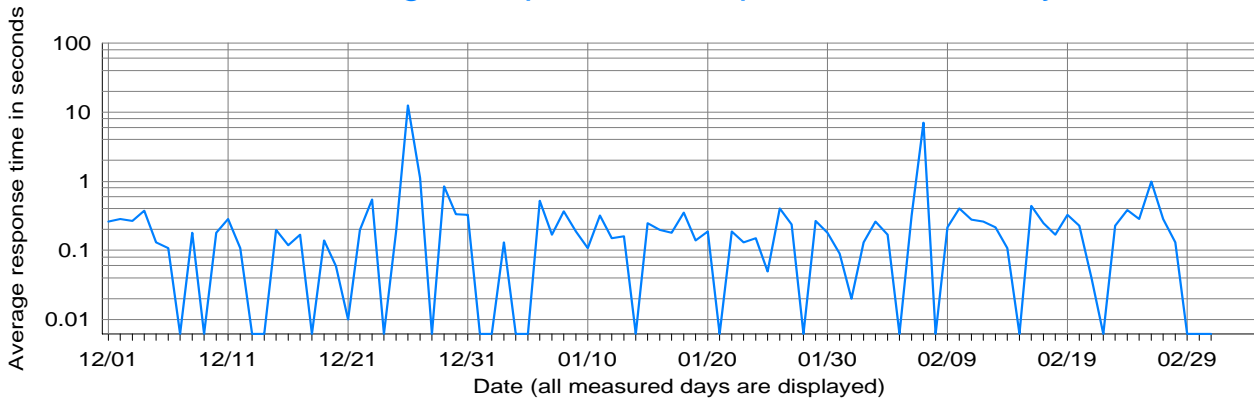


Response Time

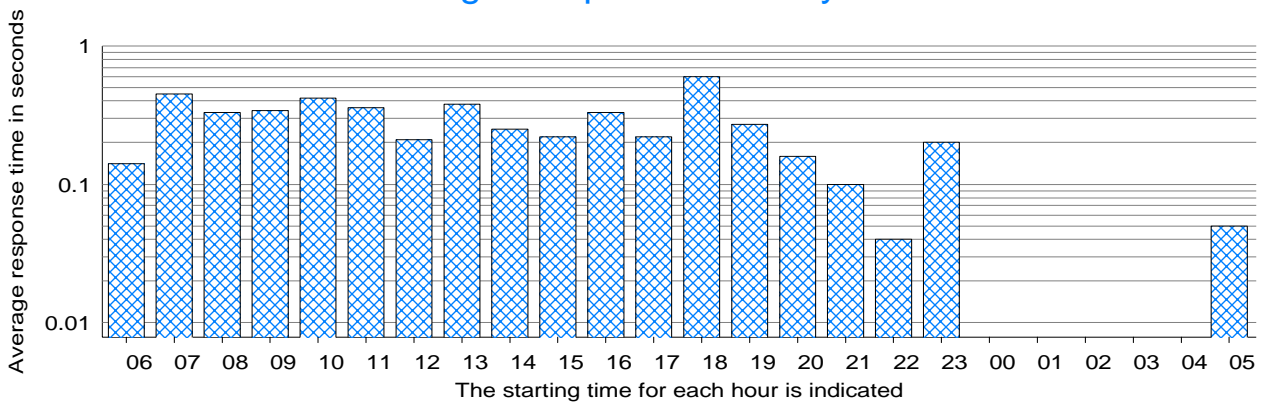
ABC Corporation
December 2003 - February 2004
Time frame 08.00 - 17.30

SWEDEN (10-ABCDE)
9406 820-2395/1521 CPU(s) 1
Internal memory in MB 1024
Disk Capacity in GB 67

Average Response Time per Measured Day



Average Response Time by the Hour



Facts

Month	Average Response Time
December -03	0.3
January -04	0.3
February -04	0.3

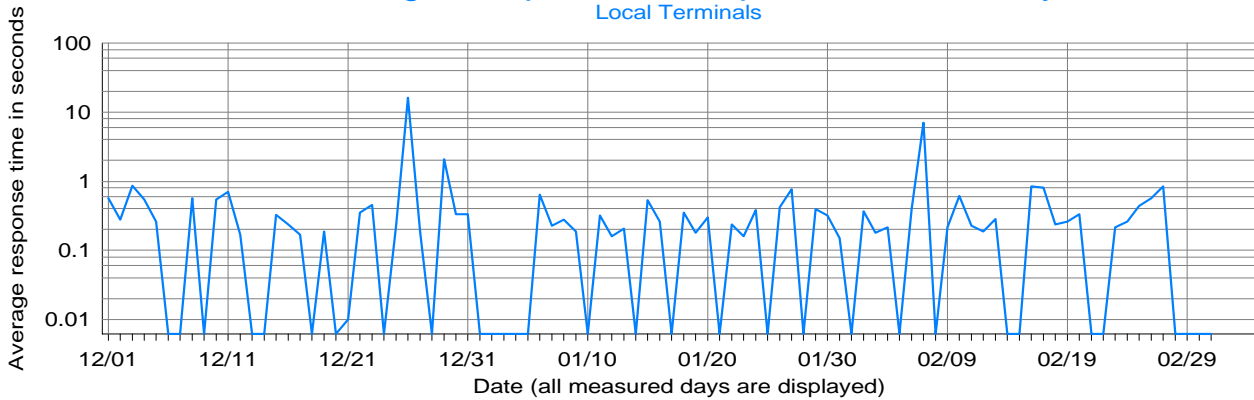
See Fact Sheet

Response Time, Local Terminals

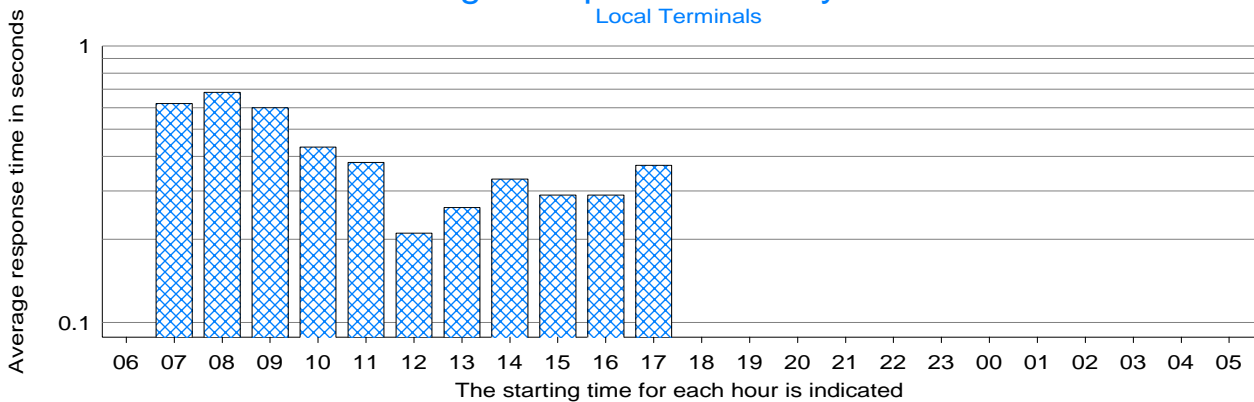
ABC Corporation
December 2003 - February 2004
Time frame 08.00 - 17.30

SWEDEN (10-ABCDE)
9406 820-2395/1521 CPU(s) 1
Internal memory in MB 1024
Disk Capacity in GB 67

Average Response Time per Measured Day



Average Response Time by the Hour



Facts

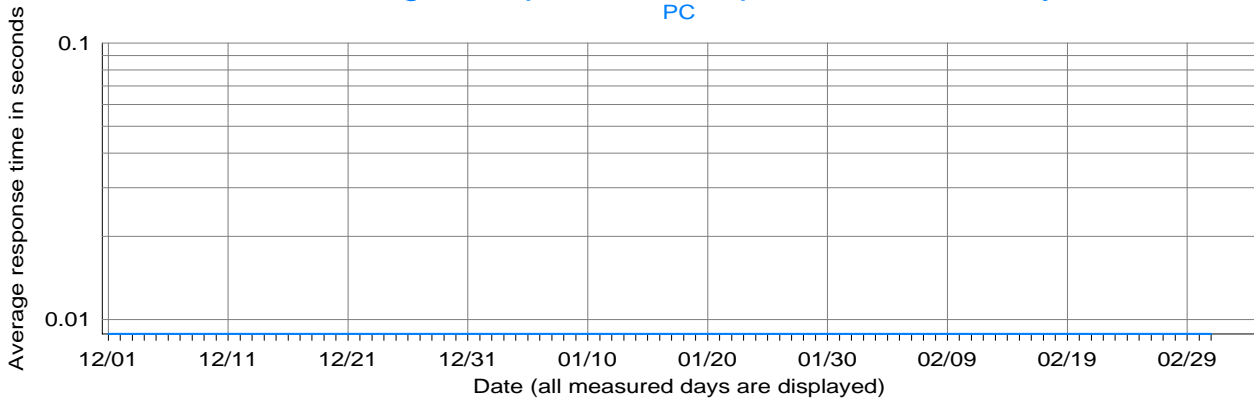
Month	Average Response Time
December -03	0.6
January -04	0.4
February -04	0.4

Response Time, PC

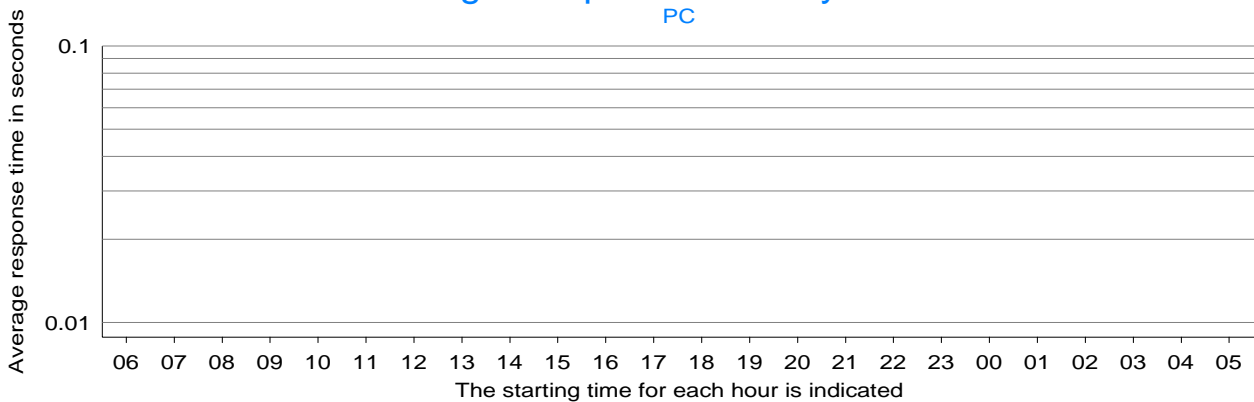
ABC Corporation
December 2003 - February 2004
Time frame 08.00 - 17.30

SWEDEN (10-ABCDE)
9406 820-2395/1521 CPU(s) 1
Internal memory in MB 1024
Disk Capacity in GB 67

Average Response Time per Measured Day



Average Response Time by the Hour



Facts

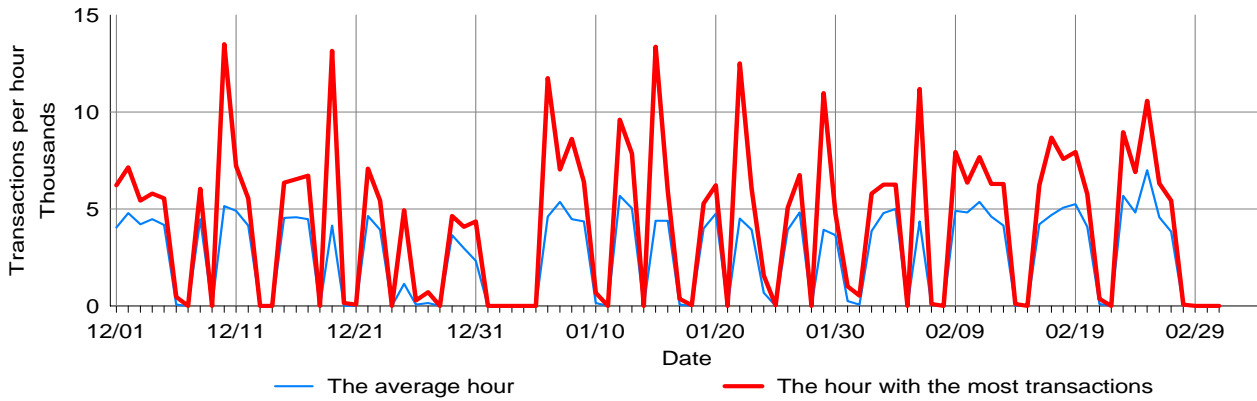
Month	Average Response Time
December -03	0.0
January -04	0.0
February -04	0.0

Transaction Volumes

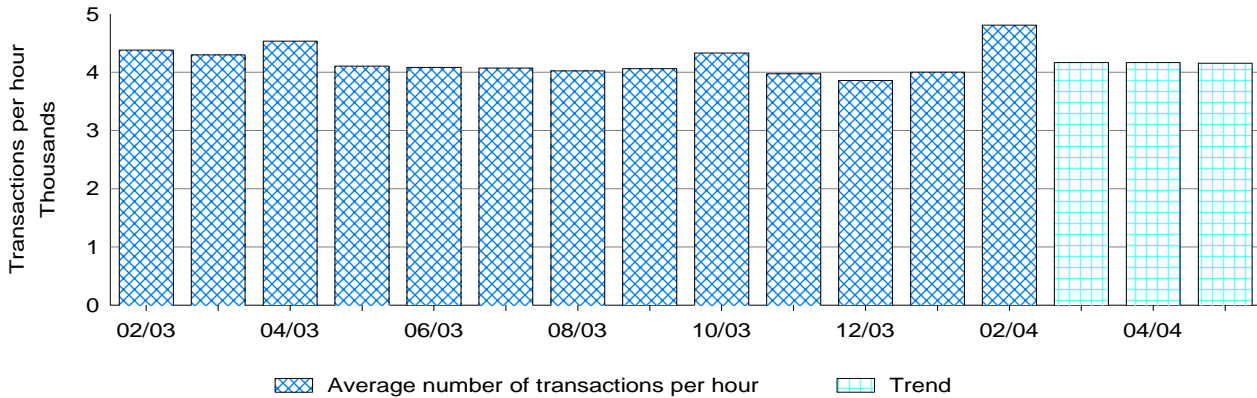
ABC Corporation
 December 2003 - February 2004
 Time frame 08.00 - 17.30

SWEDEN (10-ABCDE)
 9406 820-2395/1521 CPU(s) 1
 Internal memory in MB 1024
 Disk Capacity in GB 67

Transaction Volume per Hour



Transaction Volume per Hour - History and 3 Month Trend



Facts

Average Transaction Growth in %			
Last 12 months	Last 6 months	Last 3 months	Last month
16.0	19.0	21.9	20.1

See Fact Sheet

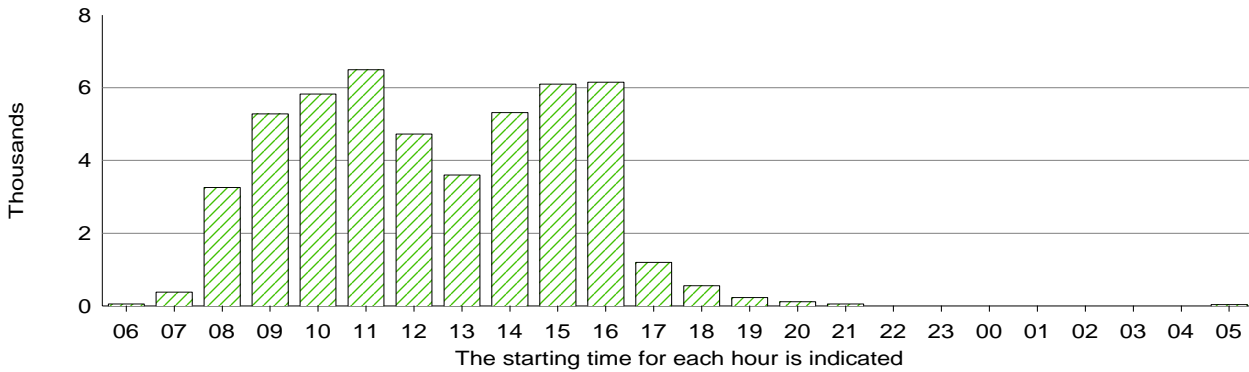
Transaction Analysis

ABC Corporation
 December 2003 - February 2004
 Time frame 08.00 - 17.30

SWEDEN (10-ABCDE)
 9406 820-2395/1521 CPU(s) 1
 Internal memory in MB 1024
 Disk Capacity in GB 67

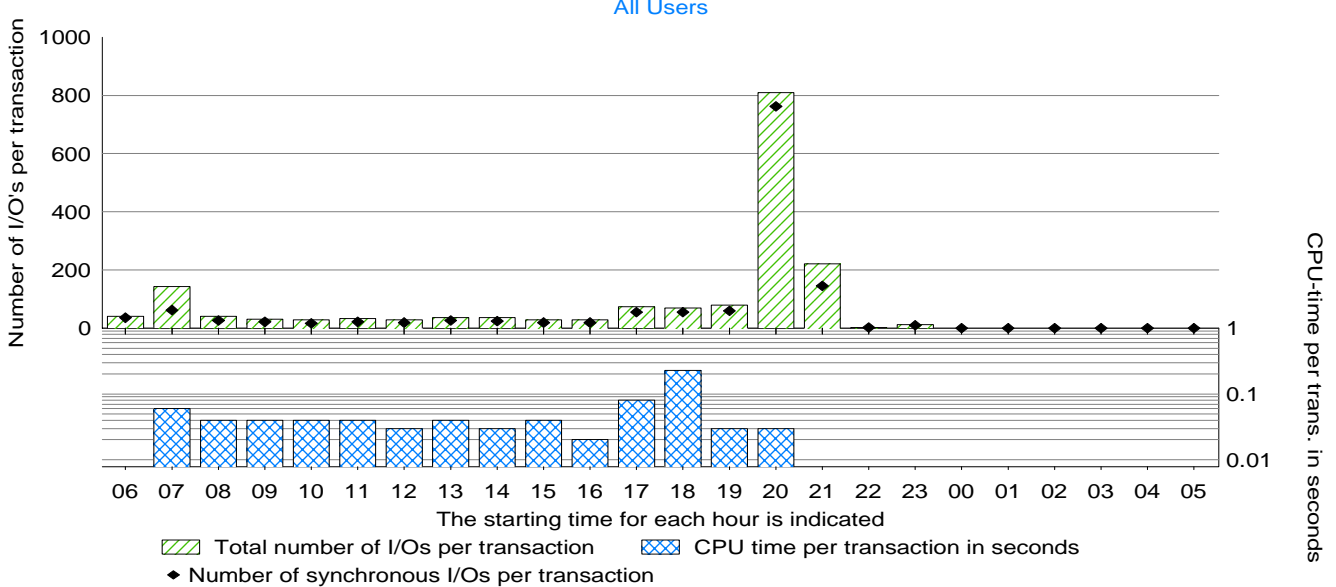
Transactions per Hour

All Users



I/O and CPU Usage for the Average Transaction

All Users



Facts

The period's average transaction contains

Month	CPU-time in seconds	Number of I/Os	Number of synch. I/Os
December -03	0.20	104	46
January -04	0.03	25	17
February -04	0.04	32	22

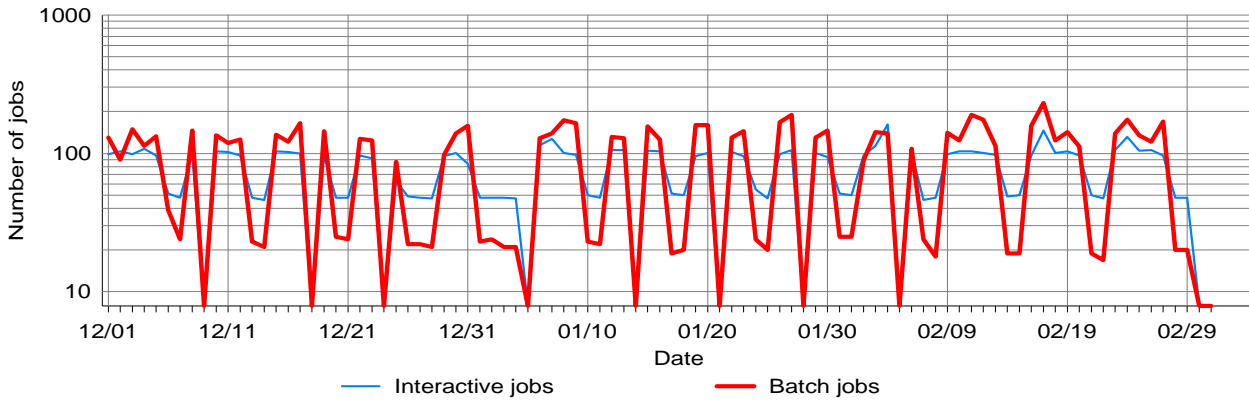
See Fact Sheet

Jobs

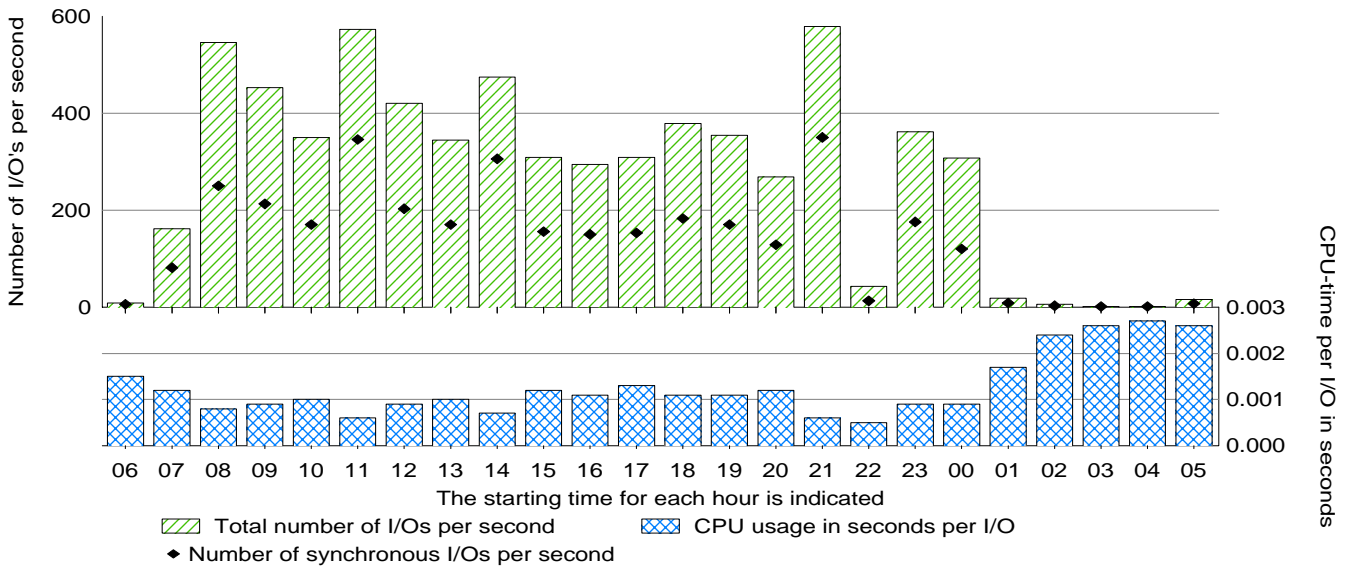
ABC Corporation
 December 2003 - February 2004
 Time frame 08.00 - 17.30

SWEDEN (10-ABCDE)
 9406 820-2395/1521 CPU(s) 1
 Internal memory in MB 1024
 Disk Capacity in GB 67

Number of Jobs per Measured Day



I/O and CPU Usage for Batch Jobs



Facts

Month	Batch jobs during the period containing		
	CPU-time per I/O	Number of I/Os per sec	Number of synch. I/Os per sec
December -03	0.0008	416	212
January -04	0.0010	401	202
February -04	0.0008	405	212

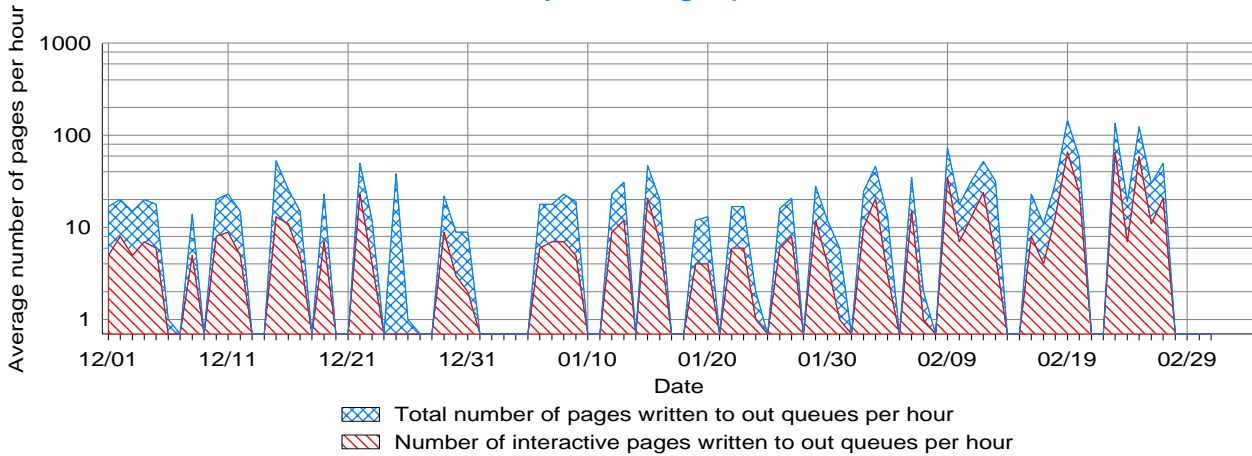
See Fact Sheet

Print Outs

ABC Corporation
 December 2003 - February 2004
 Time frame 08.00 - 17.30

SWEDEN (10-ABCDE)
 9406 820-2395/1521 CPU(s) 1
 Internal memory in MB 1024
 Disk Capacity in GB 67

Daily Average per Hour



Facts

Print jobs with the most pages to out queues during the period

Job	Number of pages
PRTJOB001	45445
PRTJOB002	7096
PRTJOB003	3451
PRTJOB004	3220
PRTJOB005	2308
PRTJOB006	2303
PRTJOB007	1896
PRTJOB008	1414
PRTJOB009	1392
PRTJOB010	1267

User with the most print outs to out queues during the period

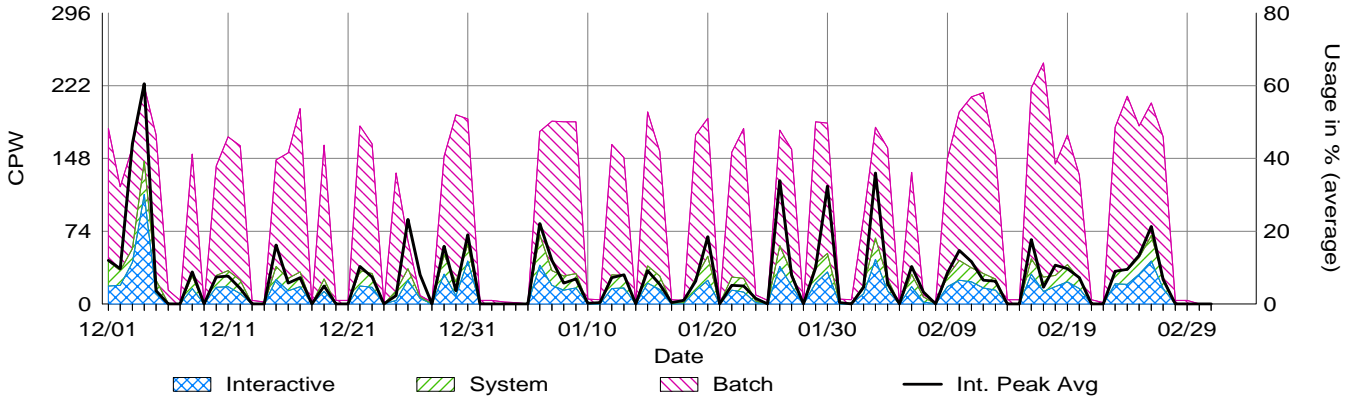
User	Number of pages
PRTUSR001	112689
PRTUSR002	5019
PRTUSR003	4987
PRTUSR004	4887
PRTUSR005	3644
PRTUSR006	3298
PRTUSR007	2822
PRTUSR008	2724
PRTUSR009	2533
PRTUSR010	2093

Processor Utilization

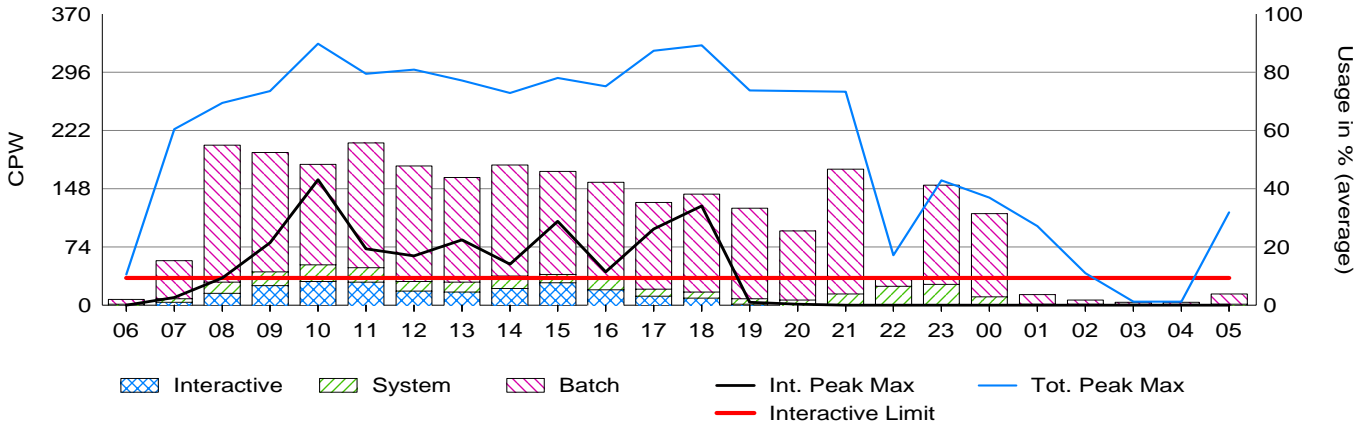
ABC Corporation
 December 2003 - February 2004
 Time frame 08.00 - 17.30

SWEDEN (10-ABCDE)
 9406 820-2395/1521 CPU(s) 1
 Internal memory in MB 1024
 Disk Capacity in GB 67

Average Processor Utilization in % per Day



Usage By the Hour, Average During the Period



Facts

	Avg.	
	Marginal	Critical
Recommended guideline in %, interactive priority	40	55
Recommended guideline in %, system + interactive priority	45	60
Recommended guideline in %, all priorities	80	90

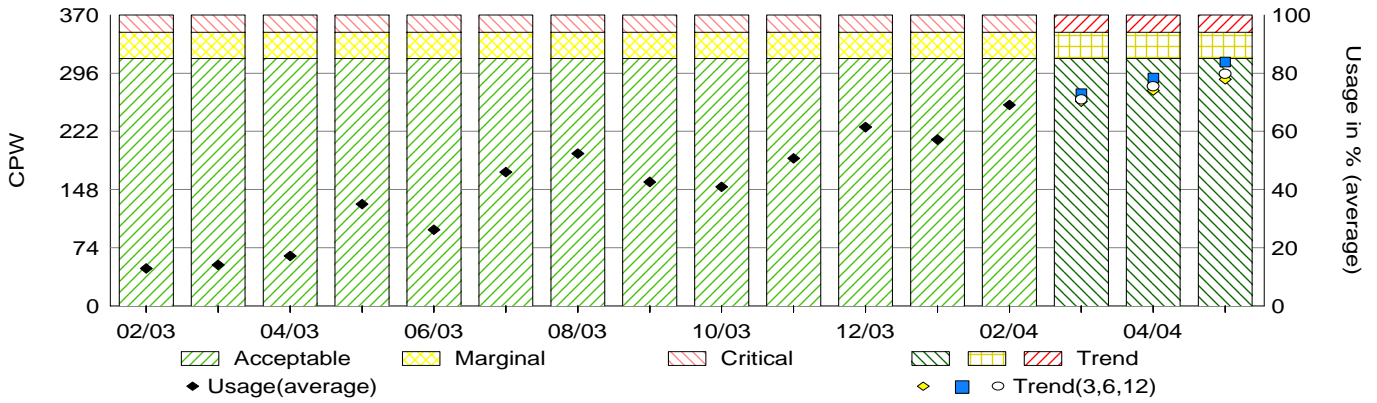
Processor Utilization, Trend

ABC Corporation
 December 2003 - February 2004
 Time frame 08.00 - 17.30

SWEDEN (10-ABCDE)
 9406 820-2395/1521 CPU(s) 1
 Internal memory in MB 1024
 Disk Capacity in GB 67

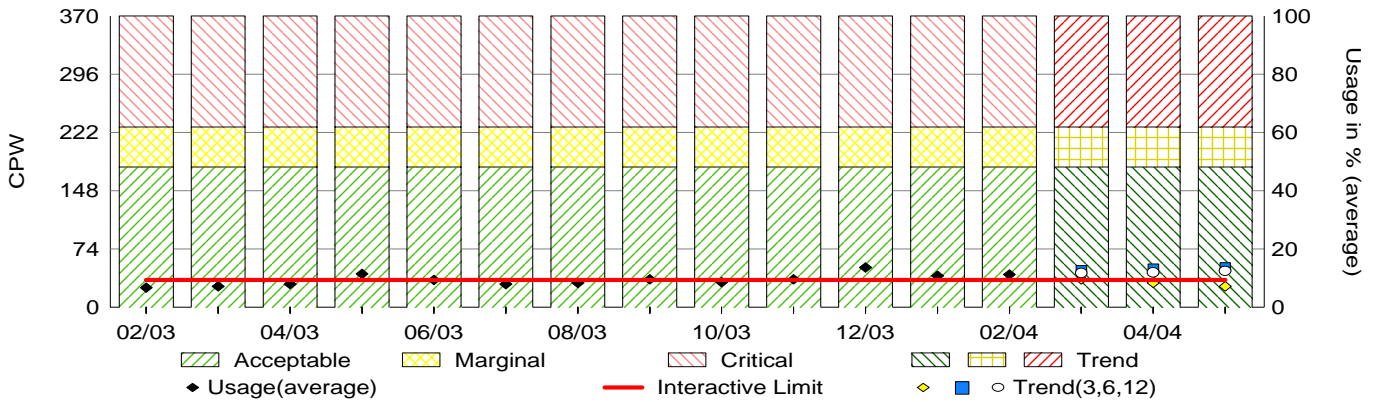
Peak Processor Utilization, Total

Three month trend, the two heaviest hours per measured day



Peak Interactive CPU

Three month trend, the two heaviest hours per measured day



Facts

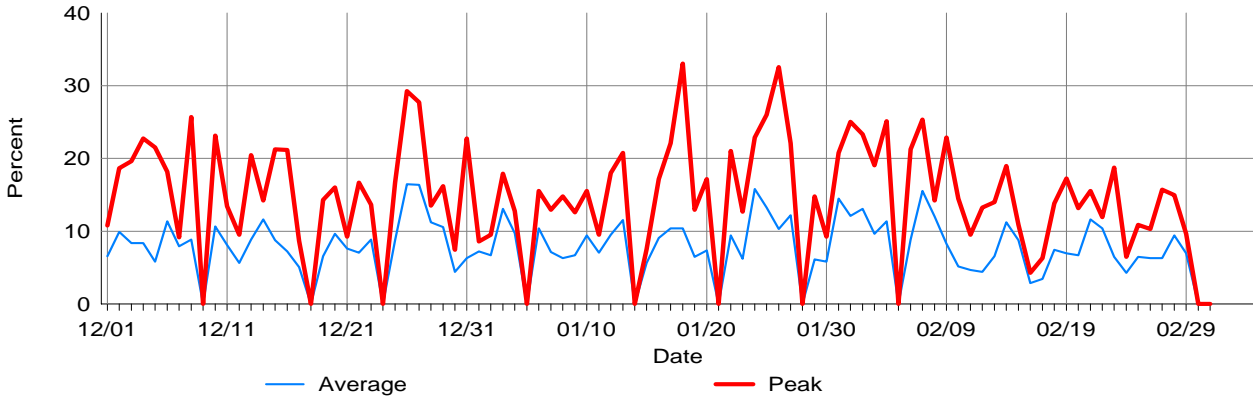
	Peak	
	Acceptable	Critical
Recommended guideline in %, interactive priority	48	62
Recommended guideline in %, system+int. priority	56	70
Recommended guideline in %, all priorities	85	94
Number of months until the guideline is reached, interactive priority	12	12
Number of months until the guideline is reached, system + int. priority	12	12
Number of months until the guideline is reached, all priorities	4	6

Memory

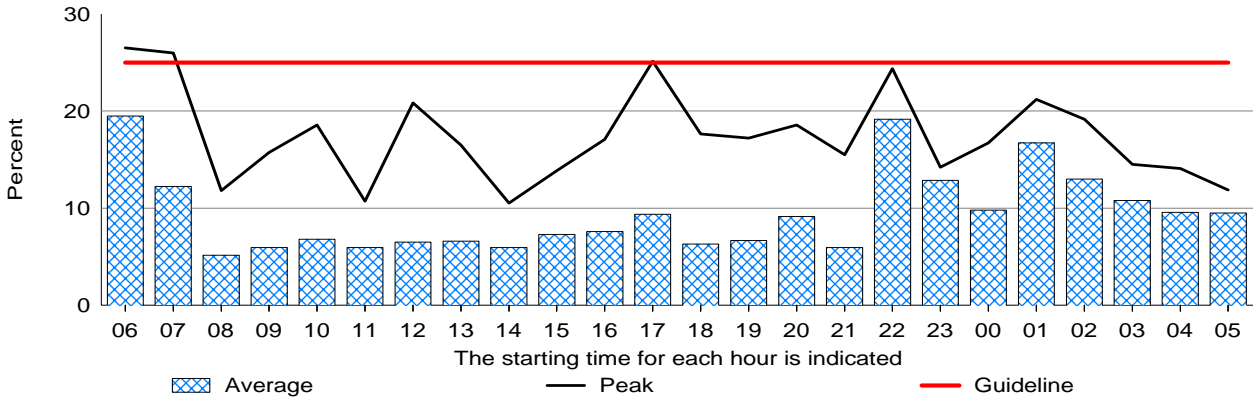
ABC Corporation
 December 2003 - February 2004
 Time frame 08.00 - 17.30

SWEDEN (10-ABCDE)
 9406 820-2395/1521 CPU(s) 1
 Internal memory in MB 1024
 Disk Capacity in GB 67

Percent of Time Faulting, Per Day



Percent of Time Faulting, Per Hour



Facts

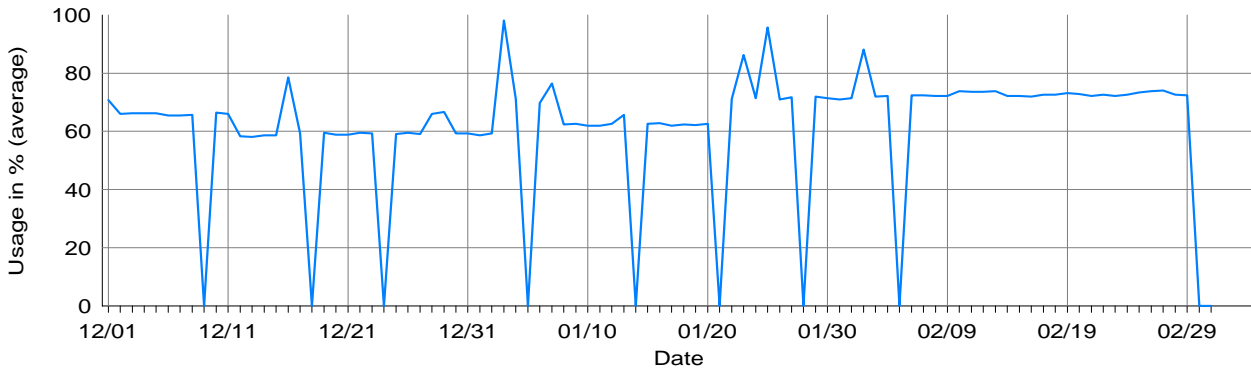
	Marginal	Critical
Recommended Guideline in %	20	25

Disk Space Usage

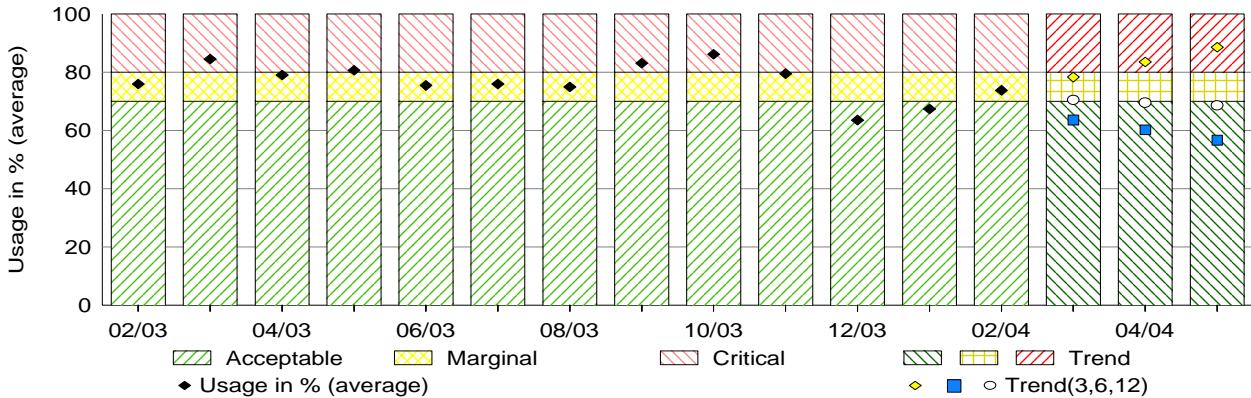
ABC Corporation
 December 2003 - February 2004
 Time frame 08.00 - 17.30

SWEDEN (10-ABCDE)
 9406 820-2395/1521 CPU(s) 1
 Internal memory in MB 1024
 Disk Capacity in GB 67

Disk Space Usage in % per Day



Disk Space Usage in %, 3 Month Trend



Facts

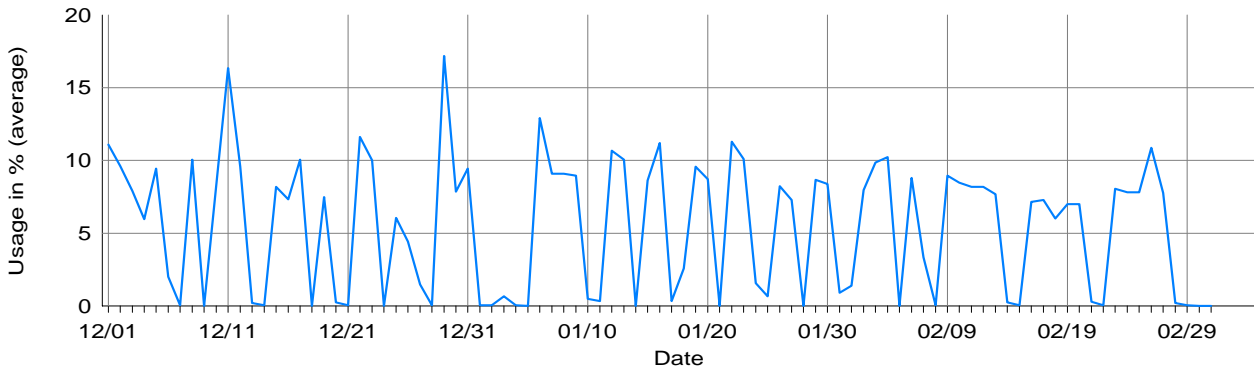
	70	80
Recommended guideline in %	70	80
Number of months until the guideline is reached	0	12
Change of stored data in % during the period		-5.81
Maximum usage of disk space in % during the period		88.18

Disk Arm Utilization

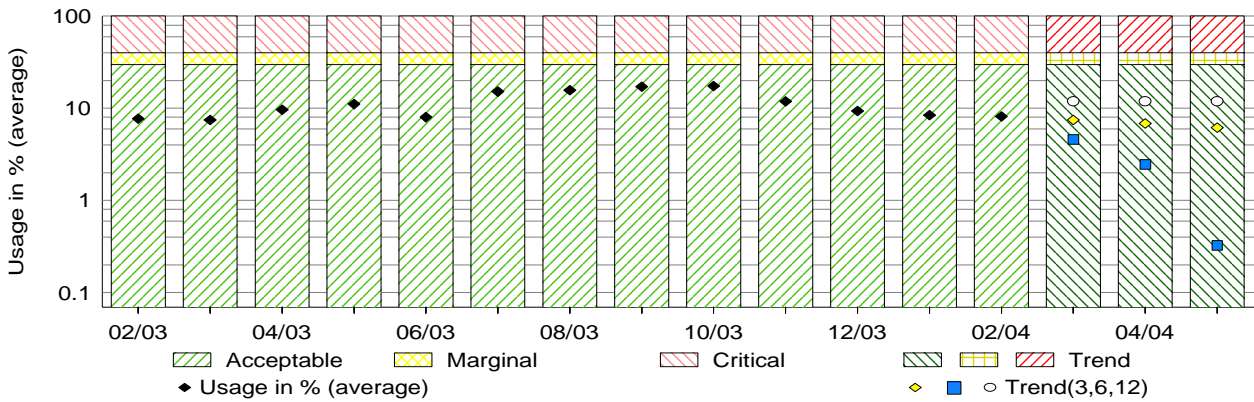
ABC Corporation
 December 2003 - February 2004
 Time frame 08.00 - 17.30

SWEDEN (10-ABCDE)
 9406 820-2395/1521 CPU(s) 1
 Internal memory in MB 1024
 Disk Capacity in GB 67

Peak Disk Arm Utilization in %
 The two heaviest hours per measured day



Peak Disk Arm Utilization in %, 3 Month Trend



Facts

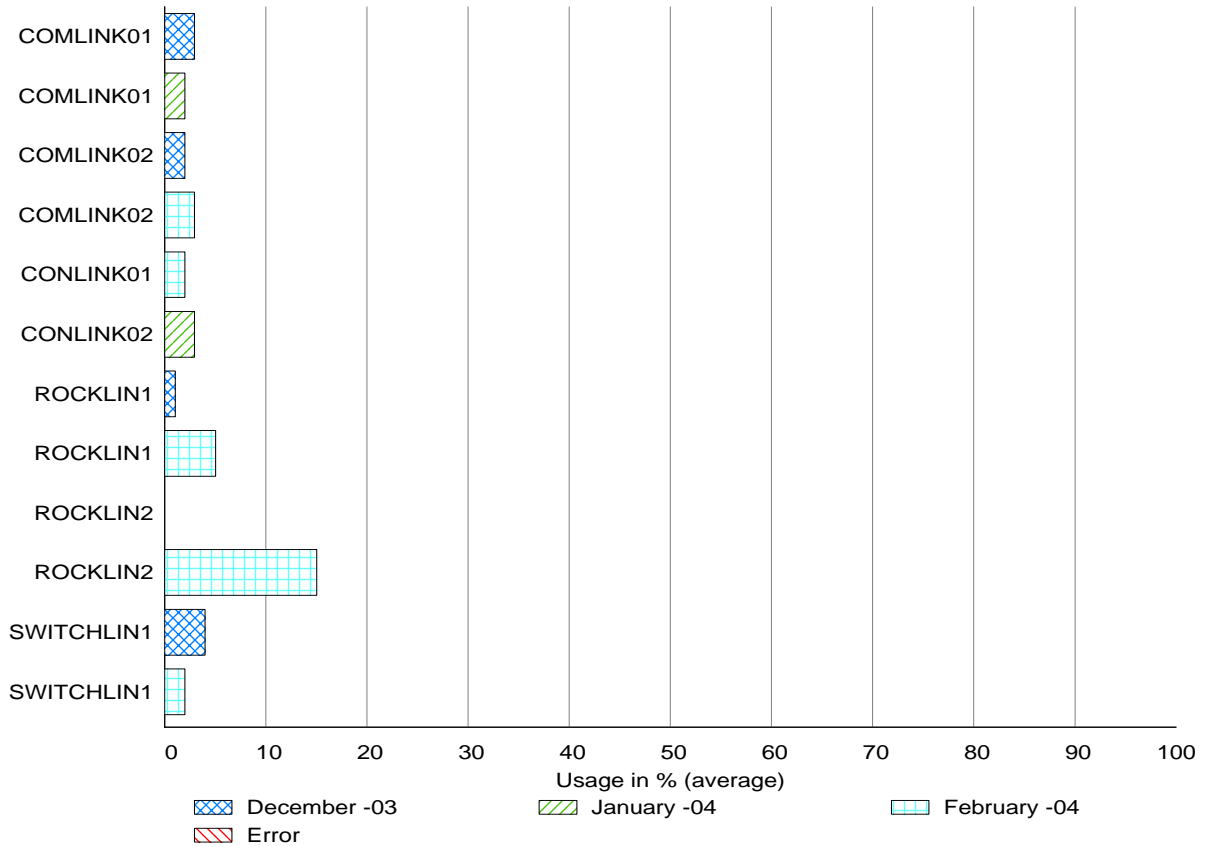
	Peak	Peak
Recommended guideline in %	30	40
Number of months until the guideline is reached		12

Communication Lines

ABC Corporation
December 2003 - February 2004
Time frame 08.00 - 17.30

SWEDEN (10-ABCDE)
9406 820-2395/1521 CPU(s) 1
Internal memory in MB 1024
Disk Capacity in GB 67

Line Utilization



Additional Facts

Report 250 - Response Time

Users with the longest response times

User	Seconds
VSAMMONS	8858.00
RJADRAN	4684.00
QSECOFR	3752.00
QSECOFR	1499.00
RBARTLEY	700.00
RBARTLEY	407.00
PWERTZLER	287.00
KTHOMPSON	206.00
GREG	196.50
PWERTZLER	153.00

Report 350 - Transaction Volumes

Users with the most transactions during the period

User	Transactions
VSAMMONS	66826
KTHOMPSON	59530
GREG	57572
PWERTZLER	47332
RJADRAN	41670
ADMIN1	40266
ADMIN2	38736
VSAMMONS	38322
VSAMMONS	35880
ADMIN3	31095

Report 375 - Transaction Analysis

Users with the most CPU-time per transaction

User	Seconds
VSAMMONS	1.51
RJADRAN	0.80
GREG	0.32
KTHOMPSON	0.31
ADMIN1	0.31
ADMIN2	0.18
ADMIN3	0.12
RJADRAN	0.11
USR01	0.10
USR01	0.07

Report 450 - Batch jobs

Jobs with the most I/Os per second

Job	Number of I/Os
USRJOB10	732
USRJOB14	621
ADMJOB01	365
USRJOB12	347
ADMJOB02	332
ADMJOB12	313
USRJOB05	311
USRJOB13	301
USRJOB34	276
USRJOB35	270

Report 250 - Response Time

Users with the longest average response time

User	Seconds
RJADRAN	66.92
RJADRAN	26.46
RBARTLEY	6.84
GREG	4.02
RJADRAN	1.31
RJADRAN	0.84
RJADRAN	0.81
RBARTLEY	0.67
RJADRAN	0.58
RBARTLEY	0.56

Report 375 - Transaction Analysis

Users with the most I/Os per transactions

User	Number of I/Os
RJADRAN	2239
GREG	1730
PWERTZLER	95
KTHOMPSON	94
ADMIN02	91
USR01	91
VSAMMONS	80
ADMIN03	80
USR010	79
ADMIN04	74

Report 450 - Batch jobs

Jobs with the most CPU-time during the period

Job	Seconds
USRJOB01	38368
USRJOB05	26995
USRJOB06	14507
USRJOB50	8306
USRJOB51	5720
USRJOB52	4615
USRJOB07	4423
USRJOB53	3521
USRJOB08	2849
USRJOB12	2439

Report 450 - Batch jobs

The most frequent jobs

Job	Number of starts
USRJOB54	1857
USRJOB55	1091
USRJOB56	1091
USRJOB57	108
USRJOB58	93
USRJOB59	65
USRJOB60	58
USRJOB61	58
USRJOB62	54
USRJOB35	54

ABC Corporation

Technical Specifications

Model
Internal memory in MB
Disk Capacity in GB

SWEDEN (10-ABCDE)

9406 820-2395/1521 CPU(s) 1
1024
67

Period

December 2003 - February 2004
Business Days M Tu W Th F
Time frame 08.00 - 17.30

Changes in the model during the period	No
Changes in the internal memory during the period	No
Changes in the disk capacity during the period	No

Missing Report Days

02/05

Trends

Number of months used for statistics	12
--------------------------------------	----

Management Summary

		Utilization in %	Months
CPU Int. Capacity	Avg.	50.49	12
	Peak	91.54	12
	Max	226.50	
CPU Sys+Int	Avg.	9.88	12
	Peak	17.61	12
	Max	51.80	
CPU Total	Avg.	47.60	12
	Peak	69.19	6
	Max	82.15	
Disk	Avg.	73.83	12
	Max	88.18	
DB CPU	Avg.	22.03	0
	Peak	34.79	0
	Max	65.34	
Memory	Avg.	8.15	0
	Peak	15.26	0
	Max	25.34	0

System Values

QACTJOB	100
QADLACTJ	10
QTOTJOB	50
QADLTOTJ	10
QPFRAJ	2
Avg.Active Jobs	710
Max.Active Jobs	1653